

MY Connection

Issue 1 Autumn 2017/ Nissan 5777



Annual Appeal
Spreads Smiles

"We have to do the best we can. This is our sacred human responsibility." ~ Albert Einstein



Bill Appleby, CEO

Securing Our Future

2017 is promising to be an exciting year. We anticipate breaking ground at two of our new senior living precincts sites in St Kilda Road and Carnegie. We are undertaking an extensive refurbishment of our community housing stock in Fulton Street/Alma Road, and have submitted our town planning application for the Anne & Eric Smorgon Healthy Ageing Living Centre extension at Gary Smorgon House.

Against a background of largely old and tired buildings, we have entered a fiercely contestable marketplace where aged care consumers are empowered to choose their preferred provider. We need to ensure Jewish Care has an offering that is desirable to community today and into the future. Dynamic, integrated and contemporary buildings are a key component of that offering.

Meanwhile, to better understand the needs, wants and aspirations of people living with disability, we have launched the first ever Disability Survey, undertaken in collaboration with Access Inc. The information gleaned

will stand us in good stead as we prepare for the planned rollout of the National Disability Insurance Scheme in 2018.

Of course, it is the support and encouragement of our community which underpins all that we do. As we launch this year's Annual Appeal, we turn once again to our community to meet the many needs of people in our community.

Thanks to community generosity, last year we supported 5200 individuals and families. Demand for our broad range of services (many unfunded or only part funded) continues to increase, as spiralling housing prices are causing growing numbers of individuals and families to turn to Jewish Care. We thank you in advance for your generous support - ensuring that we can continue to be there for people in our community in need.

Bill Appleby
Chief Executive Officer

Mike Debinski
President

Show You Care With #5000smiles

Jewish Care launched its 2017 Annual Appeal on 6 March with a dedicated social media campaign, #5000smiles. Coinciding with Jewish Care supporting over 5000 people per year, #5000smiles aims to reach 5000 people or more through Facebook, Twitter and Instagram, to spread happiness to loved ones.

Emojis are part of our Annual Appeal theme and will be used extensively throughout our campaign to convey the message and emotions that relate to our vital community issues.



The transition from Munzer to Gary Smorgon House was managed and handled very well. For all older people it is a difficult process to relocate. My mother was cared for sensitively by Munzer before leaving and by Gary Smorgon House on her arrival. Jane Campbell (Clinical Care Coordinator of GSH) was excellent and provided an excellent briefing and induction.

~Family member

To Mary & Team at Jewish Care, I would like to say a huge thank you to all of you for the impeccable care of Edward.

~Desma Napthine

To Montefiore Staff,
Our sincere thanks and appreciation for the care, love, support and dedication you give to our beloved Fanya Drita. We know that the work you do with residents is invaluable and we appreciate everything you give day after day. It is because of this that we can feel at peace with her in your care. On behalf of our whole family, thank you for all that you do to grant her a wonderful quality of life.

~Drita Family



Share your feedback about our services by emailing yoursay@jewishcare.org.au

2017 Annual Appeal



Family First at the Annual General Meeting

Our Annual General Meeting (AGM) is a time for reflection, where the organisation highlights its past achievements, appoints new board members and acknowledges long-time advocates, supporters and volunteers amongst other priorities. The event was held on 22 November at Monash University, Caulfield which included a panel discussion on the theme of 'Families in the 21st Century'.

Jewish Care President, Mike Debinski said: "Our priority is to grow Jewish Care as a sustainable organisation for future generations, by redeveloping our assets and continually reviewing our service delivery models."

Notable accomplishments outlined included the opening of The Coppel & Piekarski Family Disability Respite Centre in Caulfield, the acquisition of 9,689 sqm of land on St Kilda Road (the Montefiore site), securing the third senior living site in Carnegie in line with Jewish Care's 2014-2017 Towards Tomorrow - Strategic Priorities, and the receipt of the highly-regarded Australian Childhood Foundation Accreditation.

Other key highlights were the presentation of Life Governor Awards to Associate Professor Leslie Reti and Melissa Davis for their unwavering support and ambassadorship to

Jewish Care. Mike Debinski and Rohan Filer were re-elected as President and Treasurer respectively, and Simone Szalmuk-Singer was elected to the Board.

Jewish Care CEO, Bill Appleby said: "We have had an extremely successful year and have achieved many high level strategic goals."

"Our journey of renewal continues, as we move into the uncharted waters of a fully contestable market in 2017. By continuing to work together, I have every confidence that Jewish Care will not only maintain, but grow its position, as a most respected, extremely relevant, highly creative and vitally important social services provider to the Victorian Jewish community."

The last item on the agenda was a panel discussion that featured some of the best in the industry expressing their views on 'Families in the 21st Century'. The panel included Professor Sharon Goldfeld (Developmental paediatrician and public health physician at the Royal Children's Hospital's Centre for Community Child Health); Dr Joe Tucci (CEO of the Australian Childhood Foundation) and Anne Hollonds (Director Australian Institute of Family Studies) and one of Australia's leading voices on children's and family wellbeing.



Mike Debinski (left) presents the Life Governor Award to Associate Professor Leslie Reti



Susie Ivany (left) presents the Life Governor Award to Melissa Davis



Left to Right: Dr Joe Tucci, Anne Hollonds, Professor Sharon Goldfeld & Marilyn Kraner

We Need Your Help!


Volunteers are an integral part of our Annual Appeal fundraising efforts. Through the years, you have supported us in numerous ways to care for someone who is in need of our services.

This year's telethons will commence in April, looking to bring in much-needed donations to support our vital community services that receive little or no government funding.

Dates

| | | |
|-----------|----------|-----------------------|
| Wednesday | 26 April | 6pm - 8pm |
| Sunday | 7 May | 10am - 1pm; 5pm - 8pm |
| Monday | 8 May | 6pm - 8pm |
| Sunday | 14 May | 6pm - 8pm |
| Wednesday | 17 May | 6pm - 8pm |
| Monday | 29 May | 6pm - 8pm |
| Sunday | 4 June | 10am - 1pm; 5pm - 8pm |

Location: Jewish Care, Community Department
619 St Kilda Rd, Melbourne

 Please sign up today. Contact Lauren or Kayleigh on: 8517 5622 or telethon@jewishcare.org.au for further information



Standing Together to Help Over 5000 Lives Each Year

Jewish Care's Community Services is one of the core components of the organisation that looks to enhance the wellbeing of the Jewish community and assists in addressing societal issues. Today, Jewish Care is the primary contact for many individuals and families struggling to make ends meet and provide for themselves and their families.

Since 1848, this tree of hope has branched out to incorporate many programs including housing, counselling, financial aid, employment, disability services, crisis counselling and healthy ageing programs.

Each year, millions are raised to fund these community support programs which receive little or no government funding. Apart from the aforementioned services, we also assist people from disadvantaged backgrounds gain employment, provide training services for all sectors of the workforce and offer financial products for individuals and businesses looking for start-ups and expansions. Also, our youth mentoring and development programs display significantly better outcomes in the areas of health, education, mental health, behavioural problems and relationships.

In 2016, over **5200 people who reached out to Jewish Care** were provided with basic and long term supports. Nearly **510 individuals and families were assisted with financial needs**, and **\$1.7 million worth of Empower Interest Free loans were disbursed** to people looking to expand their businesses, for home improvements, to consolidate debt, fund education and to purchase household goods.

264 children and adults were counselled, including couples and families who were experiencing complex issues such as mental illness, drug and alcohol issues; chronic unemployment, domestic violence, child abuse and in need of emotional support.

We have also been a strong advocate in relation to the increasing problem of housing affordability. Over the past two years, Jewish Care has witnessed a significant increase in homelessness experienced by individuals and families. While mental illness, drug and alcohol use, violence and abuse are the main reasons why people are seeking counselling and support, the inability to pay rent is increasingly the reason why financial assistance is sought from Jewish Care. Last year alone, **over 200 adults and children were provided with**



Artist impression: Exterior street view of Jewish Care's Community Housing on Fulton Street

short term housing of which **23 families were moved into permanent accommodation** from transitional housing.

Ending homelessness is more than just about providing a roof over one's head. It is important that their situations are assessed holistically and supported, as sometimes these issues are straightforward such as maximising income or providing affordable housing. Other times, they are complex like addressing issues of trauma and addiction.

The Jewish community is far from immune to the national crisis, with housing needs and causes similar to the levels within the total Victorian population. Another issue is the incompatibility and unsuitability of housing options. As we know, the strength of our community partly stems from the proximity to vital infrastructure that supports our connections, including schools, synagogues and community hubs.

Professor Andrew Markus' report on *Housing Needs Within the Jewish Population of Melbourne* commissioned by Jewish Care Victoria (February 2013), estimates that around **220 Jewish persons are homeless at any one time**, with an **additional 130 persons at risk of homelessness**. In addition, nearly **7500 people living in households are experiencing rental stress or mortgage stress**.

For decades, Jewish Care has housed the community in affordable housing, providing stable and affordable accommodation to individuals, couples and families within 63 units and 8 houses. Additionally, we have 16 properties within the specialist housing and homelessness service system.

Part of Jewish Care's Growing. For Our Community Capital Campaign is to raise funds to see almost \$13 million invested in the creation of both new and refurbished housing units over the next 3 years. This development project will include 33 new and affordable one to three bedroom units and the extensive refurbishment of 63 existing apartments to house individuals and families in East St Kilda.

The other approach is to raise funds through our Annual Appeal to support many others in our community, whether assistance is needed for housing, employment, financial aid, financial counselling, disability or any other vital service. We need to stand together to help each other, so please join in our efforts by making a generous donation to Jewish Care's 2017 Annual Appeal.



To donate to Jewish Care's Annual Appeal 2017, please contact 1800 JEWISH (1800 539 474) or donate online at www.jewishcare.org.au/donate

First Disability Survey for the Victorian Jewish Community

In preparation for the National Disability Insurance Scheme (NDIS), Jewish Care and Access Inc partnered to launch the first Disability Survey to identify the needs of people living with disability in the Victorian Jewish community.

The survey was made available in three versions, enabling carers to complete it on behalf of the person with disability, a plain English version for people with disability and an Easy Read version for people with disability who prefer an easier-to-read document with pictures/icons.

Jewish Care CEO Bill Appleby said: "This survey is a critically important

initiative if we are going to create an evidence base for our service response to the Victorian Jewish community."

"The NDIS represents an important opportunity to appropriately fund and support individuals living with disability. Organisations like Jewish Care and Access Inc want to make sure they thoroughly understand the levels of support needed in our community, so that we can continue to shape our services and remain relevant in all that we do."

The full report is available on Jewish Care's website.



Over 150 Years of Community Service

Melbourne Hebrew Ladies Benevolent Society Inc, established in 1857 is a social services organisation that actively seeks to provide financial and emotional support to single mothers.

Since the formation of the society, they have always remained responsive to the needs of the community, distributing food vouchers, school uniforms and

other material aid, in addition to emotional and companionship services to isolated single mothers living in the community.


They also make home visits and provide face-to-face support to help assist single mothers to build connections with the community, synagogues and other support systems.

Jewish Care is happy to have a caring and supportive partner to supplement the work that we do for our community. Their boundless commitment to helping single mothers from disadvantaged backgrounds with financial and emotional support for over 150 years is highly commendable.

Every Person Counts

Gen17, a comprehensive survey led by Prof Andrew Markus and supported by other major Jewish foundations and organisations including the Executive Council of Australian Jewry, Jewish Community Council of Victoria and Jewish Care Victoria was launched in February 2017 for the Jewish population in Australia.

The survey aims to provide Jewish organisations with information of the change that is occurring, priorities of Jewish Australians and evidence to target their resources to areas most needed. This once-in-a-decade opportunity will cover topics such as education, Jewish continuity, affordability of Jewish life, anti-Semitism, community governance and Israel.

 To complete the survey, go to: <http://www.monash.edu/gen17#form>





Mentors and mentees of the 2016 Young Achievers Program

Appreciating Our Mentors and Mentees

Youth Mentoring Week was celebrated across Australia in October 2016, where organisations took the opportunity to recognise youth mentoring and its success, opportunity and potential.

Jewish Care celebrated the week by appreciating and highlighting the efforts made by mentors and mentees in improving their academic and vocational outcomes, facilitated through Jewish Care's Young Achievers Program and Youth Aspire Program.

Young Achievers Program

Criteria: This program conducted for the 14th year, invites Jewish students between the ages of 15-18 from non-Jewish and Jewish schools, who are motivated, goal-orientated and determined to achieve.

Aims: To develop young people's self-esteem, provide a supportive connection with the Jewish community and improve general life skills.

Outline: Program participants are matched with a volunteer mentor, participate in a range of workshops and receive an academic scholarship of up to \$500 per school year.

Youth Aspire Program

Criteria: The Youth Aspire Mentoring program was launched in 2016 specifically aimed at young people between the ages of 14-18 who are deprived of a secure and stable adult relationship.

Aims: To provide additional support for the young person and guidance to articulate and implement their goals.

Outline: Program participants are matched with a mentor for regular meetings every 4 weeks, with the possibility of applying for a \$500 scholarship to contribute towards academic or personal development.

 For any enquiries, contact the Youth Mentoring Coordinator on 8517 5999 or yap@jewishcare.org.au

\$500,000 Boost to Improve Employment Opportunities


A detailed submission by Jewish Care's Employment and Education Centre secured a grant of \$518,770 from the State Governments' Department of Economic Development, Jobs, Transport and Resources to offer sustainable employment opportunities to people from disadvantaged backgrounds. Jewish Care is one of 38 successful applicants out of 110 who applied for the Jobs Victoria Employment Network grant in 2016.

As a result of the successful award of the grant, Jewish Care will provide job seeking services for job seekers who are from disadvantaged backgrounds, predominantly, members of the Ultra-Orthodox community, unemployed for over a year and people living with disability including mental illness, as well as single parents and job seekers older than 50 years. As part of the program, Jewish Care will work closely with other employers

looking to provide opportunities for people from disadvantaged backgrounds through post-placement support and subsidies.

Minister for Industry and Employment, Wade Noonan said: "We recognise that some people in our community face multiple barriers to work. Working with employment providers like Jewish Care will help some of the most disadvantaged Victorians find work and keep it."

Jewish Care Manager Service Development, Simon Jedwab said: "We are very excited to have our work recognised with Government funding and grateful that we have the capacity to help people from disadvantaged backgrounds to get the support they need to find employment."

 For more details contact 8517 5999 or eec@jewishcare.org.au

Help Us Recover Their Names

Since 1955, Yad Vashem has worked to fulfil its mandate to preserve the memory of the 6 million Jewish people who were victims in the Holocaust by collecting their names. So far, 4.6 million victims have been recorded but many remain unidentified.

Yad Vashem is now urgently calling upon Jewish communities to help recover the missing names and identities of Shoah victims through the Shoah Victims Names Recovery Project.

i For more information visit the Yad Vashem website at yadvashem.com.au



Yad Vashem, Holocaust Museum and Memorials, Hall of Names



Cheryl Bart at Generations of Women annual brunch

Generations of Women Helping to Reduce Homelessness

Cheryl Bart AO, the 31st person in the world to achieve the Explorers Grand Slam title and a daughter of Holocaust survivors was the guest speaker at the 20th Annual Generations of Women Brunch, held on 15 November at The International, Brighton.

Cheryl Bart and her daughter became the first mother-daughter team to reach the summit of Mount Everest in 2008. They have stood at the top of mountains on seven continents (including Antarctica and South America) and skied to the North and South Poles. Cheryl is a banking and finance lawyer by profession who sits on the boards of numerous companies and organisations. She inspired the crowd with her tales of survival whilst climbing mountains and tackling the fast-paced world.

Cheryl's key message throughout her address was: 'How far do you think you can go?'

"I am YOU. I'm kind of a crazier you, it's true! But I'm also a Jewish mother. If I can climb Everest, then what can you do?"

250 women attended the event, helping to generate over \$60,000 that will be directed towards Jewish Care's Housing Support Program, to assist individuals and families experiencing homelessness.

Generations of Women Chair, Melissa Davis said: "We are thrilled to be celebrating 20 years of the iconic event on the Jewish Care calendar, that has helped to raise over \$700,000 during this period."

"The funds raised will contribute to the new housing project in East St Kilda, which is part of Jewish Care's 10-year Capital Campaign."

It's Showtime!

Check out this 2-minute video titled 'Showtime' to see how our friends at The Manders Villas rated their favourite entertainment and sports programs.

Changing Perceptions is a series of short videos encapsulating different aspects of life and how Jewish Care enables people living with disability to enjoy greater independence, confidence and self-esteem.

g To watch this video and others in the series, visit youtube.com/jewishcarevic



Connecting Generations Through Tech, Tea & Tales

Jewish Care became the first Australian aged care provider to team up with Lively and Humankind Enterprises (StoryPod) to launch Tech, Tea and Tales, an innovative intergenerational program in February 2017.

The project engages young local jobseekers to work alongside Jewish Care residents to help them use technology to connect with friends, family and their interests, and record their own life experiences on film.

This two-pronged initiative, benefitting both the young and elderly, aims to build meaningful connections across generations. Young people help the elderly to feel more connected by breaking down negative ageist stereotypes and isolation through the use of technology, and they in turn benefit by being employed as providers of these services. The project also presents young people with an opportunity to learn about and connect with their culture and heritage through recording the stories and experiences of older community members.

Through this collaboration, Lively employs young jobseekers to help older people with technology, and Humankind Enterprises engages young people to record older people's stories on film through its StoryPod initiative.

Commenting on the new initiative, Lively founder and CEO Anna Donaldson said: "We saw an exciting opportunity to combine our programs into a joint model, and received support from Jewish Care to bring the project to life."



Mikhalina Khmelnsky's (resident) story being recorded by a tech helper at Montefiore Homes Community Residence

Jewish Care Stands Against Family Violence

A team from Jewish Care including senior management, staff and volunteers marched side by side with 3500 other participants on 25 November to raise awareness of family violence.

The UN's International Day for the Elimination of Violence Against Women is one of the largest events in Victoria, established in 2009 by a committee of family violence support services, local government and the police.



Jewish Care staff at the annual march

Something for Every Parent – Parenting Forums 2017

We are delighted to continue our series of highly successful parenting forums in 2017. This free program offering has been extremely popular, with more than 500 parents attending sessions last year. Featuring well-known guest speakers on a wide range of topics related to youth mental health and wellbeing, there's sure to be something for every parent.

Closing the Confidence Gap for Girls

Margie Warrell

Tuesday 23 May

6 Steps to Family Peace

Michael Carr-Gregg and the Family

Peace Foundation

Thursday 22 June

To be included on the email list or RSVP for one of the forums, contact Cassandra Barrett on cbarrett@jewishcare.org.au



JewishCare
My Community. My Choice.

Yad Vashem Acclaims Strength to Survive

Jewish Care's second short video 'Strength to Survive' was recently acclaimed and included in the Yad Vashem Visual Centre in Israel.

'The Greatest Loss' was the first video of the series 'Rising From the Ashes' to be acclaimed and honoured with the same recognition, last year.



View *Strength to Survive* on the Jewish Care YouTube page – youtube.com/jewishcarevic



Members of the inaugural Yesod program with Jewish Care Board members

Yesod – From Participants to Incubators

The inaugural Yesod program's success has led to further involving the 2016 participants as 'incubators', to encourage collaboration between them, Jewish Care executives and Board members. This incubator concept will create opportunities for cross development and generate new ideas and solutions by harnessing their knowledge and experience.

This year's program saw the induction of 11 more members from diverse backgrounds, eager to contribute their time and skills for the betterment of society.

Yesod, our Board Leadership program was launched in February 2016 as a precursor to developing the next generation of not-for-profit directors. The program is facilitated in partnership with the Australian Institute of Company Directors, mentored by Jewish Care Board Directors and generously sponsored by Simon and Kelly Morris.

Increased Funding to Support Ageing Holocaust Survivors

Jewish Care has again been awarded a grant from the Claims Conference for 2017 to support Holocaust survivors to remain in their home and active within our community. The grant has increased by approx. \$1.8 million to over \$12 million in 2017, and will enable us to deliver over 160,000 hours of home and personal care as well as access to funding for medical, equipment and other qualifying expenses. This year's increase represents a significant rise in the number of survivors seeking to access services as they grow older and in need of help.

Jewish Care is proud to receive such a significant increase and believes this is due to three main factors:

- Our ability to advocate for and demonstrably support the needs of the community in Victoria. The Claims Conference has confidence in our ability and our mission
- There have been concerted efforts by the Claims Conference to recognise the needs of Holocaust survivors around the world, informed in part by our strong data and records
- The ongoing commitment of the German government to continue their duty to assist Holocaust survivors for as long as they live

We will continue to play an active role in advocating for the needs of all Holocaust survivors, including those who are

currently excluded from receiving assistance through the Claims Conference grant, and to broaden the eligibility criteria to include each and every Holocaust survivor as a result of the horrors they experienced during the Shoah.

In addition, Jewish Care was awarded another separate grant this year and nominated the administrator of the funds for the whole of Australia and New Zealand.



For any enquiries about the funds available for Holocaust survivors, please contact our Information and Access Team on 8517 5999



It's Our Duty to Tackle Family Violence

Our industry is a large employer of women and ultimately our core business is supporting families. In many respects, taking an active role in tackling family violence in our workplaces shouldn't be viewed as a nice thing to do but a key business imperative. At the end of the day, our organisations are not just workplaces; they are communities of people – staff, volunteers, residents, clients and families who derive a sense of purpose and belonging from their involvement.

It is acknowledged widely in Australia that family violence is an unacceptable social problem that requires an integrated, 'whole of community' approach. Although widespread, it is often a hidden problem, with victims silenced and trapped within feelings of shame and guilt. It occurs in all parts of society, regardless of geographic location, socio-economic status, age, cultural and ethnic background; or religious beliefs, and has devastating short and long-term effects on individuals, families and the community.

So, what can we do about this as employers? I believe we should take a lead role in helping to fix this pervasive, debilitating, societal problem.

At Jewish Care, we have begun our journey to tackle family violence across three major levels. The first has been to take a stand. We have developed organisational position statements on Gender Equity and Family Violence.

The statement recognises that gender-based differences should be identified and addressed in a manner that rectifies imbalance and eliminates discrimination between the sexes. Gender equity strategies seek to achieve fairness and justice in the distribution of benefits, responsibilities and access to services, with the aim of producing equitable outcomes for both men and women.

Secondly, I have been exploring how we better equip our staff and volunteers working with the elderly to respond to family violence. Ensuring staff are trained in recognising family violence, understanding its potential impact and responding appropriately should, be a key commitment of all Australian workplaces. We plan to integrate family violence training and an appreciation of vicarious trauma as a mandatory requirement of all staff.

Our final approach has been the provision of support for staff who are experiencing family violence. With statistics that recognise that one in three women are likely to have experienced abuse by an intimate partner at some stage in their lives, one can only assume that our staff will be amongst the statistics. In recognition of this, Jewish Care has decided to include a dedicated family violence paid leave clause into our industrial agreements, supporting staff to attend to matters such as court



appearances, legal appointments and to secure safe living arrangements.

From my perspective, it makes sense that secure employment with an understanding employer, is critical to preventing a victim becoming economically trapped in a violent relationship. It is an important component to empowering and enabling individuals to leave violent relationships.

Finally, responding to family violence is not only an important social responsibility, but moreover a key business imperative. The devastating impacts on both individuals and families will also negatively impact your business through increased disrupted employment patterns, added sick leave, and scared, distracted and emotionally distressed staff.

Ultimately, if unmanaged this will result in poor customer experience and reduced organisational profitability. Quite simply, you just cannot afford to not proactively tackle this issue in your workplace.

Bill Appleby, CEO

Tzeddy Surprises Children on Mitzvah Day

Tzeddy Tzedakah, Jewish Care's popular mascot, paid a surprise visit to the Upper Kinder Bet class at Gandel Besen House Campus - Mount Scopus Memorial College. The students were treated to a story reading by Jackie Lewinsohn, Jewish Care staff member, of our new book, 'Tzeddy's First Adventure' and engaged in a discussion about the importance of helping others and giving tzedakah. As the story ended, Tzeddy entered the room and got the whole class excited and dancing to music. They also received an activity book and keyrings from Tzeddy, which they all loved.

At the end of the program, Tzeddy and Jackie were presented with a terrarium that the children had made to thank Jewish Care. It was wonderful to see them meaningfully think about charity and helping others, and doing it in a really fun way.



To book a visit from Tzeddy for your school, contact marketing@jewishcare.org.au



Tzeddy with children and teachers at Mount Scopus Memorial College

Best Friends Connect After 30 Years

Magalí Kaplan, Jewish Care's Holocaust Survivor Services Program Manager and Hugh Cattermole, Chief Operating Officer visited Jewish Care UK in November 2016. While they were there, they had the opportunity to meet with Holocaust survivors with the support of Sarah-Jane who works for the Holocaust Survivor Support Program in the UK.

At one of these meetings they met Gita Kaldor, a Holocaust survivor from Hungary now residing in London. As they began talking, a few names of members of the Hungarian Holocaust Survivor Advisory Committee in Australia were recalled. The moment Gita heard Alice's name, her face lit up with excitement and soon she began to enquire about Alice and her son George. Magalí reassured that both were doing great and asked whether Gita would like to write a note to Alice. Gita was quick to write a letter in Hungarian and a few weeks later, the letter made it into Alice's hands. Alice and Gita were both from Hungary but later moved to Australia in the 1950's, having survived the Holocaust. They struck up a friendship after arriving in Australia and remained friends up until Gita left to England to be closer to her son.

Upon their return, Sarah-Jane and Magalí were keen to find an opportunity for Gita and Alice to make contact, and decided to connect them via a video call. With the consent of both parties it was organised for 24 November 2016 at 9.30am London time.

The Holocaust support team in the UK arranged for Gita to be picked up and brought to the Holocaust Survivors' Centre in

Hendon, while Magalí made it to Alice's house, where she was eagerly waiting with a cake on the table.

These were two friends who had known each other for 50 years, but had no contact for over 30 years. They spoke in Hungarian for about 20 minutes, during which they laughed and gave each other virtual kisses as they caught up on life.

Gita and Alice thanked Jewish Care for organising the video call and requested for a similar opportunity in the future.



Gita Kaldor



Alice Halasz holding Gita's letter



Families, loved ones and friends at the commemoration event held in October 2016 honouring past benefactors

Let Us Know – Because You Deserve to be Thanked

Last October, we held an inaugural commemoration event at The Coppel & Piekarski Family Disability Respite Centre honouring past benefactors who included a gift to Jewish Care in their will. Opening with the traditional prayer for the soul of the departed, family members received a commemorative plaque honouring their loved one. They were also updated about Jewish Care's capital campaign projects, which were made possible due to their loved ones' gifts.

The farsightedness and thoughtfulness of those who include a

gift to Jewish Care in their will sends a powerful message about helping those in need and safeguarding our future.

We sincerely wish we could express our appreciation to all our benefactors during their lifetime. Therefore, we are embarking on a new initiative. We are inviting you to 'Let Us Know' if you are considering or have already included a legacy gift – so that you can receive the *nachas* and *kavod* you so richly deserve.



Please contact Feygl Cylich, Manager Planned Giving on 8517 5602 or fcylich@jewishcare.org.au



Keynote speaker Paul Hoffman addressing the audience



Volunteer of the Year Anna Ozerova (right) with Sharon Maleki



Bill Appleby presents the Samuel H. Harris Award for Excellence to Marilyn Kraner (right)

A Night That Glittered

The efforts of over 700 staff and 500 volunteers were acknowledged and celebrated at the annual Staff and Volunteer Service & Excellence Awards held in December.

The event saw a record number of staff, volunteers, Life Governors, Board members, communal leaders and supporters in attendance. Paul Hoffman, the keynote speaker captivated the audience with stories of his trials and tribulations in his attempts to cross the English Channel.

Key awards categories and winners included:

- The Samuel H. Harris Award for Excellence: Marilyn Kraner
- Innovation of the Year Award: Emma Boyar and Cassandra Barrett
- Volunteer of the Year Award: Anna Ozerova
- President's Award: Magali Kaplan

- Ethos Award: Jacinta Jarutis and Melanie McNamara
- CEO Customer Service Award: Fross Driscoll and Gabrielle Maymon
- Team of the Year: Community and Gary Smorgon House Lifestyle Team
- The Leo & Mina Fink Community Service Award: Reuben Zelwer
- Professional Development Scholarships: Melinda Kidgell, Tarun Dua and Ella Turner

• Ethos Mission Award: Marcus Harty and Simon Jedwab

Staff and volunteers who have given 5-40 years of service to Jewish Care were also acknowledged with Service Awards. Daphne Simons was recognised with a long service award for her contribution to Gary Smorgon House as an enrolled nurse for 40 years.

A Picture Says 1000 Words

Two of our residents' art collections were displayed at Montefiore Homes Community Residence's main plaza and celebrated with residents' families, as they were hosted to enjoy these vivid expressions of art.

Barbara Canin's charcoal artworks represented the multi-cultural diversity of Jewish Care staff. Luba's drawings

illustrated unforgettable memories of Holocaust experiences that she and others endured.

Montefiore Homes Lifestyle Coordinator Jacinta Jarutis said: "These artworks have generated a lot of joy amongst residents, families and staff."



Barbara's portraits displayed at the Montefiore Plaza



Luba's paintings of her Holocaust experience

Mazal Tov to All Our Prize Winners!

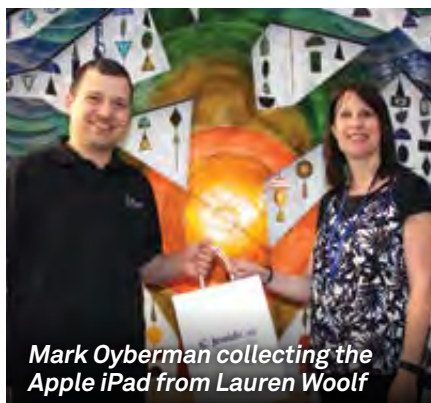
An Apple iPad, Coles Myer Voucher and Gold Class tickets were up for grabs for My Connection subscribers. Three lucky winners were chosen and awarded with gifts at Jewish Care's Head Office by Lauren Woolf, Fundraising Manager.

2016 winners are:

Mark Oyberman – Apple iPad

Tanya Kagan – Coles Myer Voucher

Cera Newhouse – Gold Class Tickets



Mark Oyberman collecting the Apple iPad from Lauren Woolf



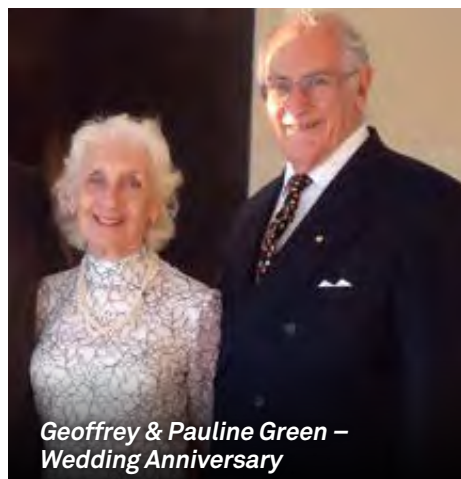
Tanya Kagan and her husband collecting her prize from Lauren Woolf



Gil Zelwer – Bar Mitzvah



Deanna and Jesse Kochen – Wedding



Geoffrey & Pauline Green – Wedding Anniversary



Ivan Cohen – Bar Mitzvah celebrated at 83 years



Lana Joel – Bat Mitzvah



Yoni M Ringelblum – Bat Mitzvah

Thank You!

We thank the following community members for sharing their special occasions with us:

Bar Mitzvah

Jack Brott
Ivan Cohen
Nathan Schutz
Gil Zelwer

Bat Mitzvah

Lana Joel
Yoni Ringelblum

9th Birthday

Alessia Tempelhof
Bella Zelman

40th Birthday

Eden Rose

50th Birthday

Shaynee Barnett

60th Birthday

Suzy Cohen
Janet Kamien
Nathan Kamien
Lynne Schmidt

70th Birthday

Marvin Fayman
Silvana Layton
Ross Maver
Robyne Schwarz AM
Ross Snow

80th Birthday

Paul Bridgeman
Susie Briner
Judith Kolt
Jutta Kuttner
Maurice Miltz
Delysia Pahoff OAM
Leon Serry
Leonard Yaffe

90th Birthday

Isi Charak
Cecile Kruss
Bernard Leibel
Eve Markov
Frank Oviss
Lore Zent

Wedding

Anniversary

Geoffrey Green OAM
& Pauline Green
Felix & Dora Hiller

Get Well

Leah Wolf

Wedding

Deanna and Jesse Kochen
Jonathan and Hadas Korman
Rabbi Linda Joseph and Richard Landis
Mark and Sasha Soffer

Opsheren

Asher Siegel

 To share your simcha, please contact our Community Team on 8517 5786 or donations@jewishcare.org.au

Photo Gallery



Ludevit Ehrenreich (centre) of Montefiore Homes celebrating Rosh Hashana with family



Mark Polonsky with his Mother Elaine during Chanukah



Eva Suss (right) and Anne Fajerman (volunteer) on Mitzvah Day at Gary Smorgon House



Letwin Nancy (left) of Gary Smorgon House celebrating Australia Day with her daughter



Rebecca Zylberman celebrated her 104th birthday with friends and staff of Smorgon Family Nursing Home



Olga Grossman (centre) surrounded by her family as she celebrated her 100th birthday



Fay Winston (left) and Myra Fisher at the Circle of Care end of year luncheon



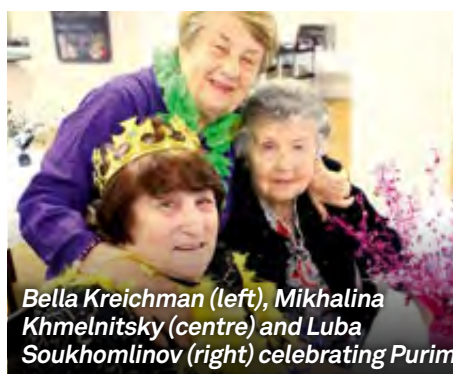
Zoe Bell (Left), Debbie Kemeny (volunteer) and Jacqueline Cowan (right) making challah



Rose Loven (left) and Lydia Filinkelstein (right) with a family member at Montefiore Homes resident and staff party



Elizabeth Slater (centre) and Sonia Morris (right) with volunteers at the Purim packing bee event held at Gary Smorgon House



Bella Kreichman (left), Mikhalina Khmelnsky (centre) and Luba Soukhomlinov (right) celebrating Purim



Gary Smorgon House resident Tikva Broh celebrating Purim with her grandson Asher Klein



Like us on Facebook to see more photos of events and activities around Jewish Care – facebook.com/jewishcarevictoria

Five Minutes With Simone



Simone Szalmuk-Singer joined the Jewish Care Victoria Board in 2016.

1. Why did you join the Jewish Care Board?

As a child of Holocaust survivors I have grown up with a strong sense of duty to look after our community's most vulnerable; doing so is at the core of my Jewish identity.

I joined Jewish Care Board, as I want to help shape the future direction of Victoria's largest Jewish services organisation. I want to play a role in ensuring that Jewish Care continues to look after our community and flourishes as an exemplary Jewish organisation operating at the highest possible standards. I feel privileged to be a custodian of such an incredible communal treasure.

2. What is your vision for Jewish Care Victoria?

Since joining the Jewish Care Board I have learnt about the breadth and depth of the organisation. I am impressed with both its professionalism and warmth towards every individual

its serves. I look forward to assisting in developing Jewish Care's strategy for the future, to ensure that the organisation continues to strive for excellence in everything it does.

3. What would you personally like to achieve during your time as a Board member?

I want to contribute to Jewish Care's future by ensuring that the organisation is robust and flexible so that it remains relevant and able to service the community's evolving needs.

I would also like to mentor and inspire future leaders to succeed me in taking on this vital responsibility in the future.

4. Tell us about your family.

I am married with 3 children aged 17, 15 and 8, all of whom attend Mount Scopus College.

5. What do you want to do when you retire?

I'm not planning to ever retire from finding and developing innovative ways to make a difference in our community.

6. What is your favourite Jewish holiday and why?

I enjoy all the Jewish holidays as they provide an opportunity to come together as a family and community and to reflect on our Jewish identity. My favourite is Yom Ha'atzmaut – Israel's Independence Day. For me, this day represents the inspirational strength and continued importance of Jewish peoplehood and nationhood.

Jewish Care (Victoria) Inc
619 St Kilda Road
Melbourne, Victoria 3004



(03) 8517 5999



info@jewishcare.org.au



jewishcare.org.au



@jewishcarevictoria



@jewishcarevic



linkedin.com/company/jewishcare



youtube.com/jewishcarevic



@jewishcarevic



blogjewishcare.wordpress.com

Please direct any feedback regarding *My Connection* to marketing@jewishcare.org.au



Yes, I want to support the 2017 Annual Appeal

MC22016

Please accept my donation of ☐ \$36 ☐ \$54 ☐ \$72 ☐ \$90 ☐ \$108

OR my choice \$ (All donations over \$2 are tax deductible)

☐ Please find my cheque enclosed (made payable to Jewish Care)

OR Please debit my ☐ Visa ☐ MasterCard ☐ Amex

Card Number

Expiry Date

Signature

Name on Card

Email

Home Phone

Mobile

☐ Yes, I would like to make monthly donations to Jewish Care

I authorise my credit card to be debited \$ per month. (Minimum \$10)

Please send me more information on

- ☐ Wills and bequests
- ☐ Simcha giving (donations in lieu of gifts)
- ☐ Becoming a volunteer
- ☐ Programs and services

Name

Address

Donate by: jewishcare.org.au/donate

1800 JEWISH (1800 539 474)

PO Box 6156, Melbourne, Victoria, 3004