

# MY Connection

Issue 1 Autumn 2015 / Nissan 5775

Celebrating  
Our Community

# Celebrating Our Community



Bill Appleby, CEO



Mike Debinski, President

Shaped by the waves of migration and multiple traditions, the Victorian Jewish community is vibrant and diverse. From Orthodox to secular, Melbourne-born and bred to those from the farthest corners of the globe, we are people from all walks of life united by Jewish history and tradition.

The strength of our community is in our differences and togetherness — young and old, rich and poor, healthy and sick, religious and unaffiliated. At Jewish Care, it's our goal to build a more resilient and inclusive community for all. A strong community not only benefits the individual but society at large. It is well documented that people lead happier and healthier lives when they feel a sense of belonging.

In this issue of *My Connection*, we celebrate the beauty, strength and spirit of our community and share Jewish Care's latest developments and achievements with you.

We've also enclosed our Supporter Survey which includes questions about donor giving and communications. Your responses will help us to understand your interests so that we can serve you better.

We kick-started the year by hosting youth from across Australia at the Maccabi-Jewish Care Community Day; a time of fun, smiles and warm intergenerational exchanges. We celebrated diversity and inclusion on International Day of People with Disability, which recognised the contributions of people living with disability in our community. And of course, for the first time in Jewish Care's history, a remarkable wedding was held in the Montefiore Homes garden between Smorgon Family Nursing Home nurse Natasha Katz and her groom Tuvia Garfinkel, bringing families, friends and happy residents together.

***"The key to community is the acceptance — in fact, the celebration — of our individual and cultural differences."***

*~ Morgan Scott Peck*

Meanwhile, our capital campaign, 'Growing. For Our Community,' commenced with the construction of our new Disability Respite Centre on Glen Eira Rd (anticipated to open its doors in September 2015) and the conditional purchase of land in Carnegie for a 120-bed residential aged care facility, subject to a successful town planning outcome.

Over the next ten years, these impressive developments, together with the construction of our St Kilda Rd Senior Living and Community Precinct and housing development and upgrades in St Kilda, will see our organisation grow and change the face of aged care, disability and community services for the Victorian Jewish community.

Being a community organisation, it's our goal to support each member to lead the life they want, regardless of personal challenges and abilities. The theme of our 2015 Annual Appeal is 'For our Community. Every Day.' The theme highlights that no matter how good life can be, one day something unexpected can happen that can turn our lives upside down. However, it is comforting to know that Jewish Care is always here to assist people in need.

As we have just launched our Annual Appeal, we invite you to help us raise the necessary funds for the delivery of vital community services such as financial support, employment and education, counselling, housing and more.

Together, we are a community. And together, we can make a world of difference.

## INBOX

**We receive many letters, comments and compliments from our community, residents and clients.**

**This section of *My Connection* features your feedback, whether it is a quick thank you, a suggestion or a letter of passionate support.**

*I was so pleasantly surprised that my mother, Pauline Malkinson, was taken for a walk by Rabbi Schneier Lange. They walked down to Caulfield Park all the way from the Munzer residence and talked about my mother's family.*

*I am quite sure this is not a part of the Rabbi's job but he did it with much care and interest. Words can never express what that means to me. Thank you, Rabbi Lange!*

**~ Denise Liebowitz**

*What a wonderful idea it was to celebrate Cup Day at Gary Smorgon House! Mum's hat was beautifully decorated and well-chosen for her, while the background music and piano added a joyous atmosphere. The whiteboard decorations and cut-outs were really nice too. Thanks for encouraging residents to get up and join in the dancing.*

**~ Berenice Laser**



**Share your feedback about Jewish Care by forwarding your letters to [yoursay@jewishcare.org.au](mailto:yoursay@jewishcare.org.au)**

### Front cover:

*Resident Yeva Guler with Smorgon Family Nursing Home nurse Natasha Katz on her wedding day.*





## 2015 ANNUAL APPEAL

### Join Our Telethons!

Telethons are an important aspect of our Annual Appeal, and our volunteers play an integral part in it. If you can spare a couple of hours of your time, please register today and make a difference!

Participation by students counts towards their community service hours.

#### WHEN?

##### April

Sun 19	6pm – 8pm
Mon 20	6pm – 8pm
Mon 27	6pm – 8pm
Tue 28	6pm – 8pm
Wed 29	6pm – 8pm

##### May

Sun 3	10am – 1pm 5pm – 8pm*
Tue 19	6pm – 8pm
Wed 20	6pm – 8pm
Sun 31	10am – 1pm 5pm – 8pm*

##### June

Tue 2	6pm – 8pm
Wed 3	6pm – 8pm

\*2 hr shifts available

**WHO?** Volunteers aged 15 and over

**WHERE?** Beth Weizmann Community Centre, 306 Hawthorn Road, Caulfield South

**HOW?** Contact Lauren or Romy on (03) 8517 5622 or email [telethon@jewishcare.org.au](mailto:telethon@jewishcare.org.au)

## Save the Date

Don't forget! Our  
Annual Dinner is on:  
**WEDNESDAY  
13 MAY 2015**

at Leonda by the Yarra  
7:00pm-10:00pm



**Your support  
will change lives!**

## For Our Community. Every Day.

How often do we find ourselves complaining about trivial matters in our lives? We take the basic things for granted — having food on our plates and a roof over our heads, or enjoying a peaceful Shabbat dinner with our family.

Then one day, something unexpected can happen leading any one of us into times of hardship and stress, health complications or financial challenges... and turning our once happy lives upside down.

Where would you turn for help if one day something happened to you?

Whether assistance is needed for housing, financial support, employment, counselling or healthy ageing – Jewish Care is here for our community. Every day.

We are the first point of contact for Jewish people in need, assisting thousands of people every year. Our 2015 Annual Appeal needs to raise \$3.5 million to help fund Jewish Care services that receive little or no government funding, so we can give people in need the tools to create a better life for themselves.



Please donate generously to Jewish Care's 2015 Annual Appeal by visiting [www.jewishcare.org.au/donate](http://www.jewishcare.org.au/donate) or calling 1800 JEWISH (1800 539 474)



Watch the video at  
[youtube.com/jewishcarevic](http://youtube.com/jewishcarevic)

## Then One Day

'Then One Day' is our emotional Annual Appeal video that describes a once perfect life that takes a turn for the worse. Eight-year-old Ava has had to run away from home with her mother because of family abuse. What happened to them is told through a storybook Ava has created.

## Fun for All Ages

In January, youth from across Australia converged at Jewish Care during the Maccabi-Jewish Care Community Day – a day of having fun while experiencing first-hand the importance of giving back to the community.

Held at Jewish Care's St Kilda Road site, 130 young Maccabeans took a break from sport to engage in workshops and activities, learn skills and interact with residents. The event included Zumba, 'Jewish Care Jeopardy', creative arts and memorable intergenerational exchanges.

This was the second time Jewish Care has supported the Community Day initiative, which was introduced as a community service component of Maccabi's 2011 Carnival.

Emma Boyar, Jewish Care Next Generation Manager, said there was no better way of celebrating community than to bring the generations together.

"The teenagers who attended were full of energy and enthusiasm, bringing their high spirits and joy to aged care residents," Ms Boyar said. "At the same time, participants benefitted from engaging with people outside their



**Montefiore resident Sydney Owzinski demonstrates his painting to the Maccabeans**

daily routines and gained greater understanding of the importance of Jewish Care as a backbone of the Victorian Jewish community."

Stephanie Lewis, a Maccabi Carnival participant, said, "I loved brightening someone's day. I could see I was making another person happy and that made me happy. I'll be back to volunteer."



**Rabbi Motty Liberow with children Muka, Miri, Yisroel and Chaim at the International Day of People with Disability party**

## Our Diversity and Community Spirit

Jewish Care marked the International Day of People with Disability in November with a fun-packed family event at Hamerkaz Shelanu Community Centre with around 150 guests.

An important day for people with disability, their families, friends and Jewish Care staff, helped increase awareness of the benefits of integration in every aspect of political, social, economic and cultural life.

Participants enjoyed face painting, Israeli dancing as well as seeing a balloon artist and a magic show, with plenty of prizes given out by David Southwick MP.

It was a morning filled with joy and a time when the community could come together, celebrate diversity and recognise the achievements and contributions of people living with disability.



**Construction of the Disability Respite Centre**

## Did You Know?

We are planning the opening of the Disability Respite Centre at 476-478 Glen Eira Road, Caulfield, in September 2015, the first of six components of Jewish Care's 'Growing. For Our Community.' capital campaign. Featuring the latest in style, innovation and functionality, the unique architectural design will cater for both children and adults in separate wings and will offer custom-built playgrounds, sensory rooms, *succahs*, kosher kitchens and other amenities.



## New and Improved Website

Our new website launched in late 2014 boasts new features such as an improved homepage menu structure with a useful 'mega menu'; layout improvements to help visually and physically impaired people; new video pods; online forms; an easier to use donation module and an enhanced site search engine. The site is also mobile and tablet friendly so that clear viewing will be compatible on all screen sizes. The new site's goal is to provide the information to users more quickly and easily, while making user navigation simpler for a more enjoyable experience.

In addition to the website, our social media activity has become a core part of our daily communication strategy. With over 1400 Facebook followers, 400 Twitter followers and 40 videos, our organisation is quickly building up a strong online community.

We are also planning to release a new mobile app for Apple and Android phones that will give Jewish Care supporters mobile access to many digital offerings, including the ability to donate from within the app.



The AGM hosted a panel on the topic of "Contemporary Intergenerational Challenges in Post Holocaust Melbourne"

## A Strong Past Year and an Impressive Future

Jewish Care's Annual General Meeting, held at Monash University, Caulfield in the presence of more than 100 people, highlighted the impressive achievements of the organisation over the past financial year. These include supporting over 4800 clients across all services, delivering 18,640 hours of respite care to people with a disability, providing 124,000 hours of home and personal care, adopting a Five Year Disability Plan and seeing an increase of 13,000 hours of voluntary service.

Looking ahead, Jewish Care President Mike Debinski spoke proudly about the organisation's progress on its 'Growing. For Our Community' capital campaign, which will see Jewish Care invest over \$180 million across 6 projects, during the next 10 years.

The AGM hosted a panel of experts on the topic of "Contemporary Intergenerational Challenges in Post Holocaust Melbourne". The panel was led by Magali Kaplan, Program Manager, Holocaust Survivor Support, and included distinguished experts Dr Anita Frayman, Dr George Halasz and Dr Esther Jilovsky, all of whom provided the audience with deep and insightful views on such an important topic. Special guest, Dr Madeleine Tress, Policy Advisor at the Claims Conference in US, also attended.

The Life Governor Award was presented by Jeffrey Appel OAM to Mr Joseph Fröhlich West. Mr West and his late wife Helen have been ardent supporters of Jewish Care for many years, and have been responsible for a Therapy Centre, the gifting of a Sefer Torah, the dedication of a *succah* and the upgrading of lighting in the *shule* at Gary Smorgon House.

Changes to the Board of Governance included the retirement of Bruce Rosengarten and Sally Genser, while Lisa Kennett, Immediate Past President of Mount Scopus College, was welcomed as a new Director and Michael Schoenfeld and Andrew Schwartz, who have previously been Jewish Care Directors were welcomed back.



To view and download our 2013/2014 Annual Report online, visit the 'News and Media' section of our website



Mr Joseph Fröhlich West received the Life Governor Award



Check out our new website by visiting [jewishcare.org.au](http://jewishcare.org.au)



From left: Jeffrey Appel OAM, Dean Phelan, Mike Debinski and Bill Appleby

## We are Expanding to Carnegie!

Jewish Care has purchased land in Carnegie for the future construction of a 120-bed residential aged care facility. The purchase is subject to a successful town planning outcome. The 7,917sqm site at 1 Wahgoo Road previously had an older style 60-bed aged care facility on it called Betheden, operated by the Queensland-based, Churches of Christ.

Jewish Care CEO Bill Appleby said, "The purchase of the Carnegie site is the final piece in the jigsaw to allow us to deliver three senior living precincts as outlined in our *Strategic Plan Towards Tomorrow – 2014-2017*. It aligns with the recent demographic analysis findings conducted by the

Monash University's Australian Centre for Jewish Civilisation, which highlights the significant shift in Jewish population into the south eastern corridor in Melbourne. Our community's continued growth in these areas will now be ideally served by this exciting development."

The purchase is just one of Jewish Care's major capital investment projects. Worth \$180 million, our capital campaign, 'Growing. For Our Community.' will see the organisation grow and change the face of aged care, disability and community services for the Victorian Jewish community over the next ten years.

## Significant Funding Boost from Claims Conference

In late 2014, the Claims Conference announced an allocation of funds to support Holocaust survivors in Australia. Following a visit from Dr Madeleine Tress, Senior Policy Analyst Claims Conference New York, Jewish Care received USD \$7.8 million to support local survivors.

"We are incredibly delighted that the Claims Conference has acknowledged our funding application, which reflects the importance of the needs of our Shoah survivors," said Bill Appleby, CEO Jewish Care. "The amount allocated for 2015 represents an increase of over 200% compared to last year. Jewish Care has always advocated extensively for the rights of Holocaust survivors and will continue to work closely with the Claims Conference to ensure they receive the support, dignity and respect they deserve."

There are an estimated 3,350 Holocaust survivors in Victoria, which is also home to the second largest proportion of

Holocaust survivors outside of Israel.

The additional funding will allow us to expand services to meet the growing needs of ageing survivors in the community and will involve home care, personal care, medical and dental assistance, socialisation, emergency aid, case management and others.



**i** *The Claims Conference funding is limited to Holocaust survivors who meet a specific set of criteria as determined by the funding body and the German Government. We encourage the community to contact Jewish Care for more information and requests for assistance on (03) 8517 5999 or [info@jewishcare.org.au](mailto:info@jewishcare.org.au)*







*Inaugural Graduating Class for Jewish Care and Selmar Institute*

## A Great Time to Study

Last year, Jewish Care's Employment and Education Centre partnered with Selmar Aged Care Education Institute to deliver nationally accredited courses in Aged Care and Home and Community Care (HACC).

After a semester of intensive study combining theory and practice, the very first graduates successfully completed their course in December.

At the end of the course, each student was interviewed and evaluated with a strong likelihood of employment at Jewish Care and within the community.

"We had some really outstanding participants who are about to join an industry sector that has huge demand," said Simon Jedwab, Program Manager Service Development. "Our partnership with Selmar has run smoothly and we

are planning to introduce more programs in 2015."

"The course not only gave me the confidence to help the elderly, but made me understand Jewish heritage and cultural values", said graduate Pawanpreet Kaur, who now has secured herself a full time job at Smorgon Family Nursing Home.

With accredited courses in Early Child Care Education and pre-accredited courses in Literacy and Numeracy, Computer Training or English Language, it is a great time to study at Jewish Care.



**For all enrolment enquiries, contact Jewish Care's Employment and Education Centre by visiting [jewishcare.org.au/eec](http://jewishcare.org.au/eec) or calling (03) 8517 5999**

## We Want to Know What You Think!

**In this issue of My Connection, we enclosed our Supporter Survey which includes questions about donor giving and communications.**

Complete the survey and be eligible for our prize draw! Win a \$500 Coles/Myer voucher or, thanks to the Classic Cinema, one of 10 double film passes.



**To download our survey or to complete it online, go to [jewishcare.org.au/survey](http://jewishcare.org.au/survey)**

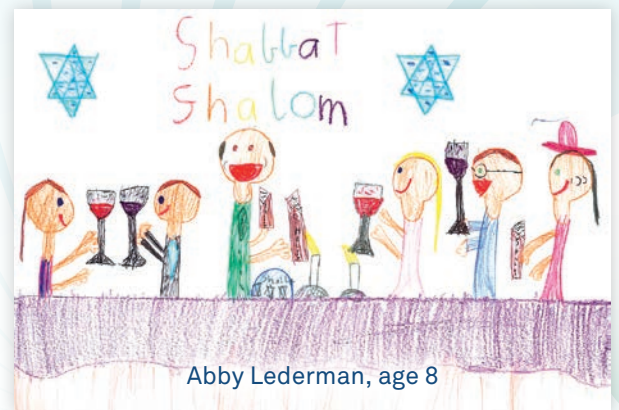




## 'Shabbat Shalom' to You!

Over the past few months, we invited children, aged 3-12, to participate in our 'Shabbat Shalom' project by drawing what Shabbat means to them.

Thanks to a great response from the community, we are delighted to share some of the amazing artwork we received from our budding young local artists.



Abby Lederman, age 8



Tiferet van der Plaats, age 8



Tamir Anshtein, age 11



Rebecca Rozen, age 5



Raphael Menahem, age 9



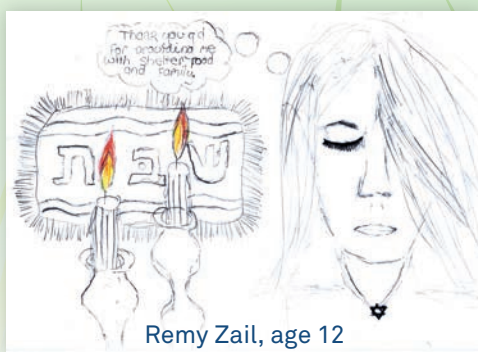
Eliana Shaltiel, age 7



Shelly Kogan, age 10



Chantelle Khmelevski, age 10



Remy Zail, age 12



Bracha Atzil, age 10



Ilanit DeVries, age 8



Subscribe to our weekly Shabbat Candle Lighting Times email list by visiting [jewishcare.org.au/Shabbat](http://jewishcare.org.au/Shabbat)





Shahaf Ohana at 'Milk n Honey' Cafe

Jump Start interest free loans assist community members with medical costs, business development, education, home renovations, simchas and car and white good purchases.

We lend money without charging interest, but with the expectation that every loan will be repaid in one to three years, based on the loan amount and repayment schedule.

Photo credit: Darrian Traynor / Media Gang

## Much More Than Coffee

What is the secret behind 'Milk n Honey's popularity? Is it the great coffee, its trendy design or friendly staff? Probably all of the above and more.

Opening in 2012 and serving gourmet dairy foods, 'Milk n Honey' became a true community hub. However, just like any start-up, the café had its ups and downs.

The 32-year-old café owner, Shahaf Ohana, moved to Australia from Israel in 2007. Prior to starting his own business, Shahaf worked in a variety of local restaurants late into the night.

"One Friday I came home from work at 1am," said Shahaf. "My wife and son fell asleep by the Shabbat table while waiting for me. That's when I realised that I had to quit working on Shabbat and spend more time with my family."

Six months later, together with his partner, Shahaf opened the 'Milk n Honey' café hoping to continue his career without compromising on family time.

"The first months were tough," said Shahaf. "We had really slow weeks when we had no customers."

Soon, Shahaf's partner left the business which put 'Milk n Honey' at risk of closure. Following a friend's advice, Shahaf contacted Jewish Care's Financial Services Team to find out about an Interest Free Loan.

"I don't know what I would've done without that loan. Luckily, Jewish Care helped me build the foundations for my business when I needed it most," said Shahaf. "Then I stopped worrying and focused on business development."

Today, almost three years later, 'Milk n Honey' is a successful establishment loved by people of all ages and interests.

"The customers own this place, not me," said Shahaf. "Thanks to working here, I have met so many wonderful people in our community who invite my family to their places for Shabbat dinners. I've also learnt that even though hard work is important, *parnassah* (wealth) comes from your values and beliefs. And then you get the feeling that someone's looking after you from above."



To find out more about Jewish Care's Jump Start Interest Free Loans, please visit [jewishcare.org.au](http://jewishcare.org.au) or contact (03) 8517 5999





Natasha and Tuvya's wedding was an unforgettable occasion at Jewish Care

## A Perfect Place for a Wedding

For some, an ideal place for a wedding is a beautiful reception hall. For others, it is an ocean beach or an overseas resort.

However, for Smorgon Family Nursing Home nurse, Natasha Katz, and her fiancé Tuvya Garfinkel, the decision was clear – they were going to have their *chuppah* at the Montefiore Homes garden.

“There wasn’t a second thought about where our *simcha* would be held – we wanted to share our special day with the residents I care for on a daily basis; they are my extended family,” said Natasha.

On 30 November, the stunning bride walked down the aisle in the tranquil and transformed garden at Montefiore Homes, with relatives, friends, residents and staff uniting as one family. From the emotional *bedeken* (the ceremony where the groom veils the bride) to Natasha and Tuvya exchanging their vows, it truly was a joyous occasion.

“The *nachas* was tangible,” said resident Yeva Guler. “I could not stop smiling and felt the beauty and warmth

of the day. Our nurse Natasha was a beautiful bride and is a unique girl,” she added. “She walked into the plaza and everyone gasped... and I know I shed a few tears, too!”

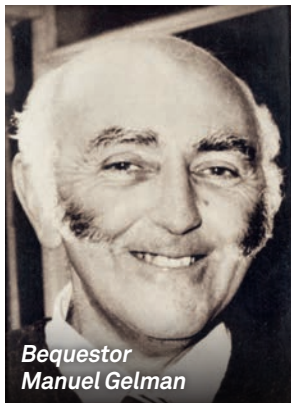
The Katz and Garfinkel families are so proud of Natasha and Tuvya’s decision to have shared their wedding day with the residents, making the *simcha* even more memorable for them and certainly an unforgettable occasion at Jewish Care.



Bride Natasha Katz adored by the Montefiore residents



# A Visionary Educator and Community Activist



**Bequestor  
Manuel Gelman**

Manuel Gelman's second birthday took place on a British ship on its way to Melbourne in 1912. When Manuel began teaching English to Australian refugees at the age of 17, he often told them that he too couldn't read or write when he arrived in Australia. They would laugh and open their notebooks with enthusiasm.

Back then, Manuel was taught by Frances Barkman, a well-

known teacher and a Jewish Welfare activist. Following a wave of migration from Poland and Russia in the 1920s, Manuel, a high school student himself, taught newcomers to integrate into Australian society.

In 1934, he established classes for Jewish refugees in Melbourne shuls and schools.

Later on, Manuel taught English, French, German, Latin as well as Educational Psychology, Teachers' Methodology and Music.

In 1947, Manuel met his wife Sylvia and they married at the Melbourne Hebrew Congregation. Together, they

travelled around the world and Manuel made the most of each trip. He enjoyed sightseeing, going to local concerts, surfing, playing violin and writing about his experiences for 'The Age' and other newspapers that frequently published his work.

For many years, Manuel was a lecturer at The University of Melbourne, the Head of the Department of Languages in the former Melbourne College of Advanced Education and President of the Australian Federation of Modern Language Teachers' Associations. His educational and community involvement was acknowledged by receiving the Chevalier de la Légion d'Honneur, Commandeur des Palmes Académiques and Chevalier de l'Ordre Nationale du Mérite Awards from the French Government.

Sadly, Manuel Gelman passed away in 1993. He left a bequest for two community organisations he strongly supported — Jewish Care and AJAX. And today, thanks to Manuel's vision, his legacy continues to change lives.



*To find out more about Wills and Bequests, please contact Feygl Cylich on (03) 8517 5602 or [fcylich@jewishcare.org.au](mailto:fcylich@jewishcare.org.au) or visit [jewishcare.org.au](http://jewishcare.org.au)*

## Valued Bequestors Honoured

Longstanding supporters, Richard and Marietta Manders (z"l), who were responsible for an extraordinary \$3.5 million bequest to Jewish Care, were remembered and celebrated at a special commemoration held in February at Jewish Care's Richard and Marietta Manders Villas for adults with a disability.

The bequest was received in 2012. However, because there were no surviving family members, Jewish Care had no one with whom to share its gratitude for the couple's outstanding contribution — until contact was unexpectedly made recently with a small group of friends.

Staff, residents and some of the Manders' closest friends attended the event.

Speaking on behalf of the Board of Jewish Care, Susie Ivany said, "Richard and Marietta were representative of a generation for whom giving came naturally. Their bequest to Jewish Care expressed one of the highest forms of tzedakah — helping people they would never meet, in ways they would never know."



**Commemorating Richard and Marietta Manders  
at Jewish Care**

Ms Ivany pointed out that the Manders' gift had significantly boosted Jewish Care's endowment fund, and together with other bequests, comprised the "down payment" from which Jewish Care's current capital development program was launched — something that would have pleased Richard and Marietta very much.



*To find out more about Wills and Bequests, please contact Feygl Cylich on (03) 8517 5602 or [fcylich@jewishcare.org.au](mailto:fcylich@jewishcare.org.au)*



Masha Zeleznikow OAM holding her family photo

## A Woman of Valour

Masha Zeleznikow OAM is well-known in our community. The key protagonist of Arnold Zable's highly acclaimed play, 'Café Scheherazade', the real Masha's biography is nothing less than fascinating.

Jewish Care's Life Governor and longstanding volunteer, Masha experienced the horrors of the Gulag forced labour camp during World War II and moved to the unknown Land of Oz. She made Café Scheherazade into an iconic hub for refugees, artists and actors, and has run the 'Tuesday Club' for over 36 years, giving hope to Russian immigrants to start a new life in Australia, just like she did for herself.

### What was it like to move to Melbourne from Europe?

All beginnings are hard and ours wasn't an exception. We spoke many languages — Yiddish, Polish, Russian, German, French and Hebrew — but English wasn't one of them. We didn't have diplomas or local experience either.

Avram drove a van, worked in dry cleaning and at knitting mills and also taught Yiddish. I learnt sewing

and worked from home. Our son got sick with poliomyelitis and had to spend two years in a hospital. And then I was expecting my daughter Janet.

### When and how did your situation improve?

In the mid-50s, we borrowed money from our friends and the Australian Jewish Welfare and Relief Society to buy a milk bar on Acland St. We also purchased the first espresso machine in Melbourne.

With time, we renovated the place as a café and called it 'Scheherazade' after the café in Paris where I reunited with Avram after the war. We worked late into the night and on Sundays which was quite radical for Melbourne.

'Scheherazade' soon became the meeting point for the Jewish elite, writers, artists and politicians such as Yvonne Fein, Albert Tucker, John Howley and Bob Hawke.

### Both you and Avram are known for your outstanding community involvement. Was it linked to 'Scheherazade' as well?

Precisely. Almost from the beginning, we hosted meetings in the back room of the cafe for Vilna Landsmanshaft Society, B'nai Brith and Jewish Welfare. Avram was the Chairman of Jewish Welfare's Financial Aid Committee and he served as its President.

My connection was different. In 1978, I received a phone call from the Jewish Welfare social worker, who asked me to visit an old Russian Jewish woman at the Alfred Hospital. This lady recently moved to Australia and didn't speak a word of English. I went to see her and it turned out that she was only 42. She attempted committing suicide as a result of the hardships of new migration. She was lonely and depressed and saw no way out.

When I met her, I got very upset. Back then, there were not enough social and recreational activities for Russian immigrants. I spoke to Jewish Welfare about it and we decided to start a regular program

addressing the needs of Russian Jews. So I organised a group of volunteers who agreed to make sandwiches and cakes for an event to be held at the Kadima in Elsternwick.

In the beginning, we expected about twenty people but a hundred showed up! The lady I visited in the hospital also came to volunteer. The need was huge and I began to visit new migrants, inviting them to our functions and excursions around Melbourne. We called it the 'Tuesday Club'.

### Does it still exist today? Who runs it?

Of course, it does. I am planning the next event right now. I find speakers and entertainers, organise catering and the program.

It wasn't easy to go ahead with the 'Tuesday Club' work when Avram passed away in 2013, however, my son John encouraged me to continue. It takes a lot of time but I enjoy seeing the smiles of people who come to our functions, and that gives me strength.

### What else inspires you and gives you pleasure?

I always loved people and wanted to help them; that's why community organisations like Jewish Welfare and Jewish Care have been my top priorities.

So too, I believe in the power of education. I started the B'nai Brith Raoul Wallenberg Unit Program assisting Victorian teachers to undertake courses at the Yad Vashem Memorial in Israel to broaden their knowledge about the Holocaust and its impact on our community.

But on a personal note, I am a grandma who loves spoiling her grandchildren, taking them to theatres and spending time together. That's what I call true *nachas*.

**i** To read more about Masha Zeleznikow's life and how she survived the Holocaust, visit our blog at [blogjewishcare.wordpress.com/](http://blogjewishcare.wordpress.com/)



# Thank You, Generations of Women!



Generations of Women Organising Committee



Generations of Women Annual Brunch helped raise funds for our Housing Program

In October, 260 guests attended our 18th Annual Generations of Women Brunch at The International of Brighton.

Guest speaker Rebekah Giles shared her own story of incredible resilience, survival and overcoming the odds. At the age of 30, Rebekah was seriously injured in the 2004 Boxing Day Tsunami in Thailand. She has since undergone extensive surgery as a result of her injuries and to this day continues to receive treatment. Despite this traumatic event, Rebekah, one of Sydney's most respected commercial litigators, became Partner at international law firm Kennedys and established a family.



Guest speaker  
Rebekah Giles

The event helped raise over \$80,000 to support our Housing Program, assisting Jewish people in need of transitional housing.

Mike Debinski, Jewish Care President, acknowledged the wonderful job of the Organising Committee, "On behalf of the many you have helped over these years, my special thanks goes to the committee, chaired by Melissa Davis, Hilary Cohen, Suzy Cohen, Miriam Farkas, Rebecca Fried, Ruth Kaye, Karen Korn, Sara Pike, Dahlia Sable, Keren Zelwer and Suzie Hendel; what an incredible job you've done bringing the event together!"

We appreciate the support and generosity of Generations of Women participants and thank our sponsors: Gandel Philanthropy, Pratt Foundation, Spotlight Foundation, Chemist Warehouse and Adapt Wealth.

## An Honour for Tony Levy

We congratulate our very own Tony Levy for being honoured with a Medal (OAM) of the Order of Australia for service to the community through aged care and social welfare organisations.

Tony Levy is a dear member of the Jewish Care family, whose commitment and contributions to the Victorian Jewish community, including Jewish Care clients and donors, has been deservedly recognised by our country.

In addition to being a Community Liaison Officer at Jewish Care, Tony also served as Chairman, B'nai B'rith Victoria, 2010-2012, Executive Member for many years; Lay Leader for 40 years; Chair, Anti-Defamation Commission, 2009-2011; and Chair, Parents' Home Committee, since 2008.

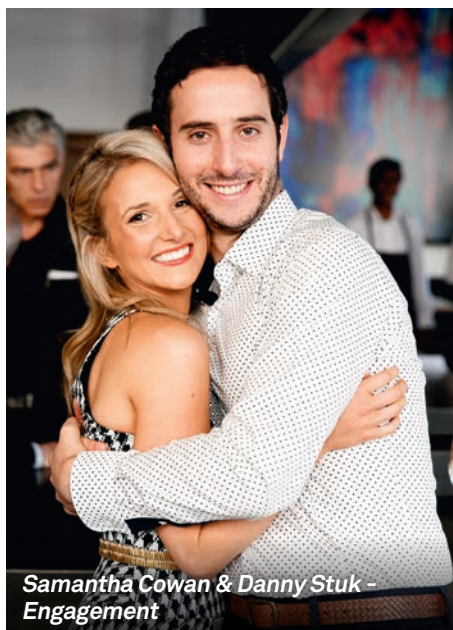
Tony's integrity, sincerity and empathy are shining examples to everyone around him. We wish him many more productive years and *nachas* from everything he does. Mazal tov!



Tony Levy OAM

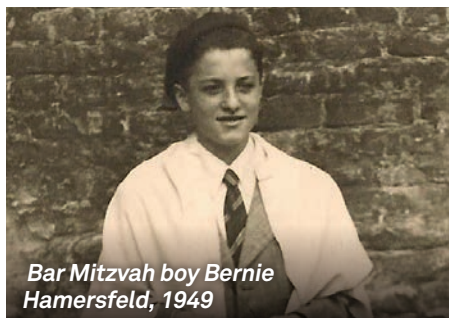


Ariel Zelwer - Bar Mitzvah



Samantha Cowan & Danny Stuk - Engagement

## A Look Back in Time



Bar Mitzvah boy Bernie Hamersfeld, 1949

The B'nei Mitzvah Program is appealing to all members of our community to send in their cherished Bar/Bat Mitzvah photos.

"Everyone looks back on their Bar or Bat Mitzvah with great nostalgia as they invoke warm feelings of their family, community and what this coming of age meant at the time", said Emma Boyar, Jewish Care's Next

Generation Manager. "So please email your prized photos to us and let's celebrate our heritage throughout the years."

"My Bar Mitzvah was at a little *shule* in Brussels in 1949," said campaign participant Bernie Hamersfeld. "We didn't have any money after the war, so there was no *kiddush* or party, but we were lucky to be alive. There was a big crowd of seven people! Three months later we came to Australia. I have celebrated the Bar Mitzvahs and Bat Mitzvahs of my three children and six of my grandchildren, with many more simchas to come."

Submit your photos to Emma at [eboyar@jewishcare.org.au](mailto:eboyar@jewishcare.org.au) and engage in the conversation. Photos will be posted up on our Facebook page with a short story about the person's Bar/Bat Mitzvah.

The Pratt Foundation generously supports the B'nei Mitzvah Program by matching each donation dollar-for-dollar, on condition that all participants complete five hours of volunteering at Jewish Care.

All funds raised through the program are used for Jewish Care's community services such as financial aid, employment creation, housing support, counselling, disability respite and other needed community support services.

**i** To find out more about our matched-giving B'nei Mitzvah Program, please contact Emma Boyar on (03) 8517 5933 or [eboyar@jewishcare.org.au](mailto:eboyar@jewishcare.org.au) or visit our website.

## Thank You!

Jewish Care thanks the following people for their donations on the occasion of their simcha.

### 9th Birthday

Seb Starr

### Bar Mitzvah

Ariel Zelwer

Toby Zayontz

Sonny Morris

### Bat Mitzvah

Ramona Chrapot

Yael Meltzer

Ella Bergman

Georgina Davis

### Engagement

Samantha Cowan &

Danny Stuk

### Wedding

### Anniversary

Joe & Helen

Eisenberger

Brian & Judy Marks

Keith & Ursula

Steinhardt

Michael & Mary

Cohen

Annita & Lionel

Sharpe

### 40th Birthday

David Vorchheimer

Melanie Kupshik

Dov Farkas

### Fun Run

Doron Abramovici

### 60th Birthday

John Lange

Rodney Kagan

Rael Kuperholz

Michael Sherr

### 70th Birthday

Sue Aarons

Evelyn Adin

Betty Frid

Barry Fink

Freda Sable

### 80th Birthday

Irma Hayden

Pam Durra

Marlene Dryen

Neville Sackville

Nathan Fink

Peter Bancroft OAM

### 85th Birthday

Greta Eisfelder

### 90th Birthday

Rae Rothfield

Lewis Bell

Ruth Phillips

Henry Factor

Leon Freedman

### 91st Birthday

Sally Iglicki

### Special Birthday

Harry Rafalowicz

Annette Smorgon

**i** To share your simcha, please contact our Development Team on (03) 8517 5963 or [development@jewishcare.org.au](mailto:development@jewishcare.org.au)



## Did You Know?

Sending an e-card in lieu of gifts is a great way to mark a special occasion. Choose the best ecard for your loved ones at [shop.jewishcare.org.au](http://shop.jewishcare.org.au).



# Photo Gallery



Rabbi Schneier Lange with Alasdair Clark at The Manders Villas Succot celebration



From left: Bill Appleby with Brian Samuel at Jewish Care's Progressive Leadership Luncheon



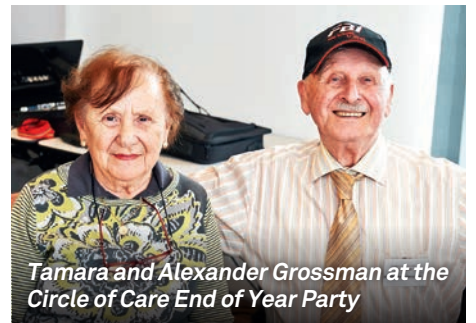
Mitzvah Day celebration at Montefiore Homes



Susie Ivany and Mike Debinski present the Life Governorship Award to Debbie Dadon (centre)



Munzer residents Gertrude Fink and Chaim Kornwasser celebrating Cup Day



Tamara and Alexander Grossman at the Circle of Care End of Year Party



Harry Rafalowicz with great-grandson Moshe Cohen at the Gary Smorgon House Chanukah party



David Friedgut lighting the menorah at the Healthy Ageing Chanukah party



Montefiore residents enjoying a Chanukah picnic at Emerald Lake



Charley Fox lighting candles at the Disability Services Chanukah party



From left: Young Achievers Charlie Buchner, Shlomit Kuttner and Daniel Tashlik



Mazal tov to our Young Achievers who finished another successful year with flying colours!



For more photos visit our Facebook page at [facebook.com/jewishcarevictoria](https://facebook.com/jewishcarevictoria). To watch our latest videos, visit [youtube.com/jewishcarevic](https://youtube.com/jewishcarevic)

# A Ticket For Your Carer

Jewish Care and the Social Inclusion Leadership Committee lead a campaign of realisation and change that actively promotes the inclusion of all Jewish people with disability in employment and community life in Victoria.

As part of the campaign, we encourage Jewish people with disability, their families and carers to explore obtaining a Companion Card. A practical initiative, accessed through the Victorian Department of Health, the card provides a great deal of value. This card removes the financial barrier for people with disability who require attendant care support to participate at events, activities and venues. The support person is able to attend free of charge at a range of events and venues across Australia.

In Melbourne, some of the venues and events include the Melbourne International Arts, Comedy, Jazz, Film and Fringe Festivals, the Melbourne Zoo and Aquarium, the Melbourne International Flower and Garden Show, the Melbourne Symphony Orchestra and the Theatre Company, and many sporting venues.

To be eligible for a Companion Card, applicants must:

- be a permanent resident of Australia,
- have a permanent disability, and
- due to the impact of the disability, require lifelong attendant care.



For further information, visit  
[www.companioncard.gov.au](http://www.companioncard.gov.au) or  
call 1800 650 611.



Jewish Care (Victoria) Inc  
619 St Kilda Road  
Melbourne, Victoria 3004



(03) 8517 5999



[info@jewishcare.org.au](mailto:info@jewishcare.org.au)



[www.jewishcare.org.au](http://www.jewishcare.org.au)



[facebook.com/jewishcarevictoria](https://facebook.com/jewishcarevictoria)



[twitter.com/jewishcarevic](https://twitter.com/jewishcarevic)



[youtube.com/jewishcarevic](https://youtube.com/jewishcarevic)



[@jewishcarevic](https://instagram.com/jewishcarevic)

Please direct any feedback regarding *My Connection* to [marketing@jewishcare.org.au](mailto:marketing@jewishcare.org.au)



100% Recycled

## Yes, I want to donate to Jewish Care's 2015 Annual Appeal

MC12015

Please accept my donation of ☐ \$25 ☐ \$50 ☐ \$100 ☐ \$150 ☐ \$250

**OR** my choice \$ (All donations over \$2 are tax deductible)

☐ Please find my cheque enclosed (made payable to Jewish Care)

**OR** Please debit my ☐ Visa ☐ MasterCard ☐ Amex

Card Number

Expiry Date

Signature

Name on Card

Email

Home Phone

Mobile

☐ Yes, I would like to make monthly donations to Jewish Care

I authorise my credit card to be debited \$ per month. (Minimum \$10)

Please send me more information on

- ☐ Wills and bequests
- ☐ Simcha giving (donations in lieu of gifts)
- ☐ Becoming a volunteer
- ☐ Programs and services

Name

Address

Donate by: PO Box 6156, Melbourne, Victoria, 3004 [www.jewishcare.org.au/donate](http://www.jewishcare.org.au/donate) 1800 JEWISH (1800 539 474)