



# MY Connection

Autumn 2010

5,000 people in crisis  
will call Jewish Care  
this year

David Smorgon OAM  
Opens 2010 Annual Appeal  
— page 3

Engaging the Next Generation  
at Family Fun Day  
— page 4

Glen Eira Villas' First Residents  
— page 7

Menachem Zeimer, Age 7,  
Our First Tzedakah Box Donor  
— page 10



## Message from our President



Bruce Rosengarten, President.

**This year, 5,000 people in crisis will contact Jewish Care.**

5,000 people – neighbours, friends, family members, work colleagues. The young, the elderly, the unemployed, the family of a person with a disability, new business

owners, families starting out, children, parents, siblings...

Any one of us, G-d forbid, could be hit by crisis. This is why Jewish Care was established over 160 years ago: because as a community, we are committed to helping each other.

In doing so, we also impact on the world around us. As the Hon Premier John Brumby stated at the opening of Glen Eira Villas (**see page 6**), the humanitarian values of our community has helped to shape the fabric of Victorian society.

As our first residents moved into their new home at Glen Eira Villas (**see page 7**), we were proud to see the realisation of our vision to respect and value each individual, regardless of ability, age or circumstance.

But vision alone is not enough. As a community organisation, we rely on and are grateful for the involvement and support of our community which helps to transform our vision into reality.

This edition of our newsletter celebrates the dedication of our many donors, volunteers and supporters who have partnered with us in so many ways over the last several months to help us to translate that vision into reality. Our thanks to:

- Our Patron David Smorgon OAM, and our Gala Dinner organising committee of Jasmine Dindas, Karen Goldenberg and Annette Smorgon (**see page 3**)

- Our fantastic Family Fun Day Co-chairs Kylie Appel and Romy Bursztyn (**see page 5**)
- Don and Sonia Marejn, our two very special community supporters who were honoured recently with our inaugural philanthropy award (**see page 10**)
- Rosalie Silverstein and the fantastic contribution made by the Posh Opp Shoppe towards supporting children with a disability (**see page 11**)
- Delysia Pahoff and our wonderful Friends of Montefiore (**see page 11**)

And to this list we must add the 400 guests who attended our Annual Appeal Gala Dinner, the hundreds of families who attended our fabulous Family Fun Day in March; the 300 volunteers who provide assistance every day of the year; the 600 staff who ensure quality care and the thousands of donors whose generosity helps to make all this possible.

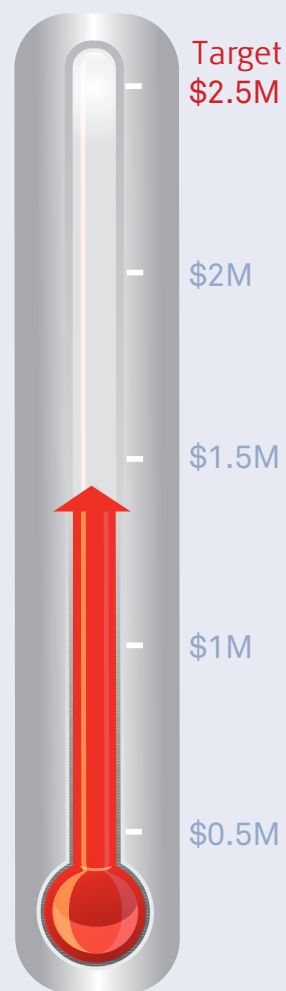
One young member of our community who certainly feels that sense of community is seven-year-old Menachem Zeimer (**see page 10**). He was so inspired at our Family Fun Day, that he donated his year's charity savings to Jewish Care.

Please take an example from young Menachem and give generously to our Annual Appeal (**see the donation coupon on back page**) so that we can respond to the 5,000 people in crisis who will contact us this year.

Bruce Rosengarten – President, Jewish Care

## 2010 Annual Appeal

## 2010 Annual Appeal



- 80 people face homelessness every month
- 2,000 households survive on less than \$249 per week
- 1 in 5 adults struggle with mental illness
- 1 in 10 Jewish Victorians over 65 are affected by dementia
- 1 in 3 families have experienced some form of family violence

**These are not just numbers – these are lives of people in OUR community.**



David Smorgon OAM, Patron.

## David Smorgon OAM Opens 2010 Annual Appeal

**Gala Dinner Raises \$400,000 Towards \$2.5 Million Target**

David Smorgon OAM, Patron of Jewish Care, called on the community to champion the 2010 Annual Appeal in support of people in crisis at Jewish Care's Gala Dinner, held 23 February at Leonda on the Yarra.

Addressing a crowded room, David Smorgon said, "I am honoured to be the Patron of Jewish Care... Our Jewish community is a representation of the wider community with all of its issues. Yes, we do have poverty, domestic violence, drug and alcohol issues and even homelessness in our own backyard. Jewish Care is at the forefront of helping people to meet the challenges they face. Jewish Care now needs our support."

The evening also provided an opportunity for the community to be addressed by Jewish Care's new Chief Executive Officer Bill Appleby, "I will be standing firm in my resolve and have courage in my convictions to ensure that Jewish Care's services continue to evolve to respond effectively to the changing needs of our community."

"Our sincerest gratitude goes to David Smorgon OAM and the organising committee of Jasmine Dindas, Karen Goldenberg and Annette Smorgon for their time, effort, commitment and dedication."



Laura and Mark Davis, Tim Bursztyn, Dale and Melanie Smorgon.



Jasmine Dindas, Karen Goldenberg, Annette Smorgon.



L to R: Caren Greenstein, Anthony Saben, Allan Greenstein, Adrian Cohen, Pam Shapiro, Mark Shapiro, Hillary Cohen, Allan Rosen, Michal Saben, Dana Rosen.

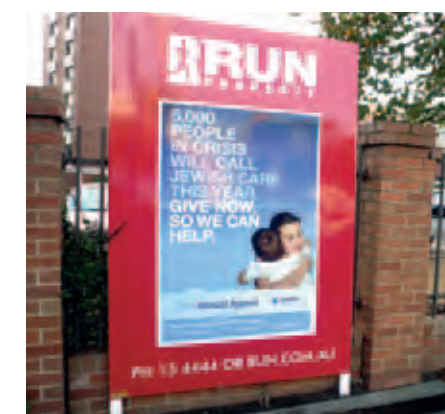


Rochelle Davis, Vicki and Shaun Aisen, Lisa de Winter.

## Thanks for Your Support!

Thank you to the following real estate agents who provided community boards for our recent Family Fun Day and Annual Appeal:

Gary Peer  
Geoff Nixon  
Gross Waddell  
Hocking Stuart  
L J Hooker  
Noel Jones  
Run Property  
Teska & Carson  
TBM Commercial  
TBM.com



# 5,000 PEOPLE IN CRISIS WILL CALL US...

JEWISH CARE NEEDS \$2.5MILLION TO ANSWER THESE CALLS.

Joe, Michelle and their two young children were hit hard by the GFC. Behind in rent and facing eviction, Michelle called us. We covered the family's most immediate needs and our financial counsellor helped the family to address their debts. Joe received assistance from Always Moving Forward to explore training options to make his skill base more marketable. "I hope some day we can repay your kindness," Michelle said. "Your support has made all the difference."



## Family Fun Day

## Get Our New Tzedakah Box and Teach Young People to Care



Jewish Care's new family-friendly tzedakah box is designed to teach young people about the importance of caring for one another and enables families to share the joy of giving together.

**Don't miss out – get your Jewish Care tzedakah box today! Contact the Development Team on 8517 5963 or [development@jewishcare.org.au](mailto:development@jewishcare.org.au)**

## Volunteers: Make a Difference!

Share your talents, your abilities and your desire to give to others!

Join more than 300 passionate and dedicated volunteers of all ages and walks of life who help provide Jewish Care's vital services to the community.

**For more information on volunteering opportunities, contact Jacque Robinson on 8517 5700 or [jrobinson@jewishcare.org.au](mailto:jrobinson@jewishcare.org.au)**

## Family Fun Day: Combined Effort Creates A Colossal Success

Hundreds of families enjoyed an incredible day of fun and celebration at Jewish Care's first Family Fun Day on Sunday 21 March. The phenomenal success of the event represented the cumulative efforts of our fantastic organisers, the generosity of our donors, sponsors and volunteers and the support of all those who attended.

Proceeds from the event will support Jewish Care's work with young people and children.



## Volunteers Create Festival of Family Fun

Family Fun Day was the inspiration of just two people. Imagine what hundreds can achieve for our community if we put our minds to it?

The idea for Family Fun Day began to take shape about a year ago, when Kylie Appel and Romy Bursztyn were exploring local volunteering opportunities.

The duo contacted our Development Team and a community-wide festival to support Jewish Care's vital work with young people and children evolved.

"Much of Jewish Care's work helps to strengthen families," Romy explained. "And strong and healthy families make for strong and healthy kids."

"The value of tzedakah is very important in our community," Kylie added. "It teaches our children to make a difference. The Jewish community needs our support and if we can improve the lives of local families and young children, we are very privileged."

Other members of the Family Fun Day Committee included Candi Apel, Natalie Bassat, Vanessa Brott, Deb Cohen, Sharona Goodman, Mandy Kirsh, Lillian Kline, Leigh Krongold, Michelle Levy and Lisa Lurie.



Family Fun Day Co-Chairs, Kylie Appel and Romy Bursztyn



## Do you know a child who would enjoy our Family Fun Day Activity Booklet?

To get your free copy, please contact us on 8517 5963, [development@jewishcare.org.au](mailto:development@jewishcare.org.au) or download directly from [www.jewishcare.org.au](http://www.jewishcare.org.au)

## A Huge Thank You to Our Sponsors and Supporters

**PLATINUM** Greg Rosshandler & Family

**GOLD** ANZ, AUDI, Bialik College, Entertainment Store Group, Futuretronics, Hard Hat Digital, Jagen, Legend, Omnigraphics, Royce Hotel, Steve Bedwell MC.

**KIDS CORNER** Playgro.

**SILVER** Dance Heads, Dov Farkas, Gross Waddell, Ice Events, Leighton Contractors, Lifelounge, Link Financial Services, Lowe Lippmann, Malvern Central Shopping Centre, MediRest, Mercator Lighting, Melbourne Photobooths, Print Dynamics, Run Property, Schetzer Brott Appel, seek.com.au, Soccerwise, Teska & Carson.

**BRONZE** Action Recruitment, Baron Corporation Pty Ltd, BeActive Physio, Ben Weinstein Photography, Central Equity, Chemist Warehouse & My Chemist, Cullen Capital, Geoff Nixon, Glicks, Hocking Stuart, Karyn Lurie Web & Print Design, LJ Hooker, Marquise and Books to Wear, P&B Lawyers, River Capital, Seed, Spotlight Foundation, TBM, TBM Commercial, The Art Factory, High St Medical Clinic.

**RAFFLE SPONSORS** Australian Jewish News, Antler, Baby Love, Barings Landscape Design & Maintenance, Bloom, Equuscorp Pty Ltd, Finesse Skin & Body Care, Futuretronics, Fruit Box, Grace, Impact Evaluation, Kings Salon, Korimco, Lady Marmalade Salon, Lee Hirsh, Leisure Learning, Love N Lustre, MG Studio Boutique, Miriam Berenson Design, Nice Pak Products, Nine West, Playcorp, Re-Creation Health Clubs, Renaissance Supermarket, Royce Hotel, Ruby Teva Designs, Samsonite, sass & bide, Shine Group, Telstra, West End Home and Gifts, White Soda, Zuza.

**DONORS** Johnny & Anita Baker, Mr Michael & Mrs Carol Casper, Brandon & Davina Chizik & Family, DBR Corporation, Federated Tennyson Imports Pty Ltd, Kidder Williams Ltd, Mr Gideon & Ms Lillian Kline, Ben & Ella Kohn & Family, Leighton Contractors, Mina & Graeme Levy & the Levy Family, Jeffrey Mahemoff AO & Helen Mahemoff & Family, Nice Pak Products Ltd, Andrew & Amanda Rettig, Sotextiles.



## 5,000 PEOPLE IN CRISIS WILL CALL US...

JEWISH CARE NEEDS \$2.5MILLION TO ANSWER THESE CALLS.

*Esther, 40, moved to Melbourne with her three school-aged children to escape her violent husband. Esther's youngest child has a disability, her oldest is angry and aggressive and her middle child is quiet and withdrawn. The family faces additional financial pressures of living in proximity to Jewish schools and shuls where rents keep soaring. Our counselling team is helping Esther to address years of accumulated abuse and to build more effective parenting skills. Access to the Children's Respite House has helped give the whole family a much needed break.*



## Disability Services

Premier and Patron Launch  
Glen Eira Villas for People with a Disability

The Hon John Brumby, Premier of Victoria, honoured the Jewish community for its humanitarian contribution to Victorian society at the opening of Glen Eira Villas, Jewish Care's newest housing development for people with a disability.

"The Jewish values of family, kindness, respect and charity are ones which have helped shape the Victorian community," Mr Brumby said. "Glen Eira Villas will provide many people with the respect everyone deserves."

Sharing the podium was the project's Patron, Naomi Milgrom AO. "Three years ago we were motivated by a model of inclusiveness," she said. "Jewish Care's leadership is an inspiration to our community."

Located on the same site where Victoria's first permanent supported accommodation for people with a disability was established in 1979, Glen Eira Villas again leads the Victorian community in providing housing for people with a disability. Located in the heart of the Jewish community, the new development offers a unique blend of independent living, individualised support and community engagement in a *heimish* environment.



Maurice Smith, Deanna and Len Levin.



Premier John Brumby and Rabbi Meir Shlomo Kluwgant watch as Naomi Milgrom AO, Patron, affixes the mezuzah.



Galit Sarig, Zac and Sandra Chester.



Jack Gringlas, Jeffrey Appel, Bill Appleby.

**Victoria**  
The Place To Be

## MEDIA RELEASE

From the Premier of Victoria

Wednesday 10 February

### NEW JEWISH RESPITE AND HOUSING SERVICE

The Premier of Victoria John Brumby today opened a new respite and housing care service for people in the Jewish community requiring assisted living.

Mr Brumby said the Victorian Government provided \$400,000 towards the Jewish Care Glen Eira Villas which will care for members of the Jewish community who require support, including residential aged-care services to 200 people.

"The Jewish values of family, kindness, respect and charity are ones which have helped shape the Victorian community," Mr Brumby said.

"It is because our Jewish community itself has been part of Victoria for so long and because a strong ethic of care is so central to the Jewish tradition."

Mr Brumby said the Jewish community had long been a leader in helping shape the fabric of our society and that the Glen Eira Villas would provide many people with the respect everyone deserves.

"A person's culture, their community, their faith and traditions are right at the heart of who that person is, which is why the Victorian Government is proud to support this development," he said.

"The Jewish community has long been a leading example of compassion and kindness and the Glen Eira Villas will provide people with a much needed culturally appropriate respite and disability care service."

The Glen Eira Villas comprises 16 suites that will provide permanent housing for 16 adults with disabilities, along with four respite suites that will be used by up to 25 families every year. The complex also includes a Communal Hub that will be available for residents, community, youth and sporting groups.



For a copy of our Glen Eira Villas brochure, please contact us on 8517 5963 or [development@jewishcare.org.au](mailto:development@jewishcare.org.au) or download directly from [www.jewishcare.org.au](http://www.jewishcare.org.au)

Bringing Hope  
to Ballarat

Tikvah, the name of Jewish Care's uplifting Mental Health Program, means 'Hope' in Hebrew and that is what it provides to participants and their families. The group recently enjoyed a long weekend touring Ballarat.

The weekend of relaxation, kosher cooking, lovely accommodation and good fun culminated with a visit to the historic Ballarat Synagogue.

The annual holiday is made possible by funding from the Commonwealth Carers Respite Centre and ensures a planned restful respite for carers.

**For more information about our Tikvah program, contact Susan Wein on 8517 5925.**

First Residents Celebrate their Own  
Independence Day at Glen Eira Villas

On 19 April 2010, the morning of Israel's 62nd Independence Day, the first two residents of Jewish Care's Glen Eira Villas celebrated their very own independence day when they received the keys to their new villa on Glen Eira Road. Welcoming the residents into their new home, Bill Appleby, CEO said, "Glen Eira Villas' visionary model is about strengthening community involvement. I encourage the community to join together and make this a true hub of inclusion for all."



Uri Rosenberg and Andrew Olb settle into their new suites at Glen Eira Villas.

## Help Build an Inclusive Community for All

Since first launched at Jewish Care's 2006 Gala Dinner, \$3m has been raised towards the construction costs of Glen Eira Villas.

We need your help to bridge the remaining \$1.5m shortfall. Please consider aligning yourself with the vision of Glen Eira Villas. By investing in naming rights, your family name will be synonymous with a leading edge community project that embodies the qualities of compassion, freedom, equality and social justice.



Glen Eira Villas is located in the heart of our community.

**To discuss funding opportunities, contact the Development Team on 8517 5963 or [development@jewishcare.org.au](mailto:development@jewishcare.org.au)**



## 5,000 PEOPLE IN CRISIS WILL CALL US...

JEWISH CARE NEEDS \$2.5MILLION TO ANSWER THESE CALLS.

Benjamin, 28, was in need of money and a place to live. He was suffering from a mental illness and estranged from his family. We linked him with specialist out-patient psychiatric support and helped him find accommodation. He looks forward to joining Jewish Care's Mental Health Program so that he can connect with the community through activities and outings.



## Community Support Services

## \$120K Boost for Disadvantaged Jewish Jobseekers

Always Moving Forward (AMF), Jewish Care's recruitment and training service, has received a \$120,000 grant to help disadvantaged Jewish jobseekers get back into work.

The money is part of a multi-million dollar government initiative. Under the banner *Victoriaworks for Jobseekers with Employment Challenges*, \$6.32 million is being invested by the government in 37 metropolitan and regional employment programs. The grant will help AMF to support jobseekers through job matching, work preparation, training, industry orientation, work experience and mentoring.

**Employers – help us support jobseekers by registering your job vacancies with Always Moving Forward on 9528 4466.**

## Securing Restitution for Holocaust Survivors

Supporting survivors and their families has been an essential part of Jewish Care's work for over 60 years. Jewish Care's Helen Viknyanskaya and Peter Wolfram offer survivors and their families assistance in negotiating the difficult and often traumatic task of applying for restitution pensions and payments. This past year, they have helped to process approximately 700 restitution applications.

Recent changes in eligibility criteria from the Holocaust Claims Conference has meant that more people may be eligible for some form of restitution while others already receiving restitution may now be eligible for additional funds.

**For more information about Holocaust claims restitution, call 8517 5999.**

## New Piano a Noteworthy Addition

Music is an integral component of Jewish Care's recreational program for aged care residents, and the donation of a new baby grand piano at Gary Smorgon House has certainly struck a chord for residents there. Sponsored by the Jack and Robert Smorgon Families Foundation, the new piano debuted recently as part of the Gary SmorgonHouse ongoing concert series.

**To assist our music program, contact our volunteer concert coordinator, Rosalie Silverstein on 0438 368 260.**



## Services for Older People

## Celebrating Yom Ha'atzmaut

Flags, felafel and folk songs were part of Israel's 62nd Independence Day celebrations at Jewish Care.



## Yom Hashoah at Jewish Care

Holocaust Remembrance Day in memory of the six million Jewish people who perished in the Holocaust, was commemorated by staff and residents on Sunday 11 April. Jewish Care's ceremonies coincided with community commemorations worldwide, and included the lighting of six candles by survivors and singing of the Partisan Song and *Hatikvah*.



## Gary Smorgon House Shines in Accreditation Review

The Aged Care Standards and Accreditation Agency (ACSAA), the government's independent accreditation agency, recently awarded a perfect score of 44/44 in its first audit of Jewish Care's Gary Smorgon House.

"We are extremely delighted with this achievement," CEO Bill Appleby said. "Gary Smorgon House staff have attained a terrific outcome with its first accreditation. I am proud that this follows on from consistent achievements in all our aged care services."

Opened July 2009 in the heart of Caulfield, Gary Smorgon House addresses the accommodation needs of the Jewish community. Catering for low and high care residents as well as dementia clients, Gary Smorgon House offers both permanent and respite accommodation. Of the 120 suites, almost all have been filled with only a few low care suites currently available.



**For more information about Gary Smorgon House, contact our Intake Team on 8517 5999.**

## Development



Don and Sonia Marejn with Bruce Rosengarten.

## Award Recipients Highlight Circle of Receiving and Giving

As a young orphaned couple leaving war-torn Bialystok, Don and Sonia Marejn had to nominate an address for their suitcases before setting off for Australia. The only address they could cite at their distant destination was Jewish Welfare in Victoria.

Generous and modest in equal measure, the couple have spent their lives supporting the organisation that was their lifeline when they first landed on these distant shores.

Their devoted support for aged care services over many decades was honoured when they were bestowed Jewish Care's inaugural award for outstanding philanthropy at our Gala Dinner in February.

In accepting the award, Mr Marejn explained that caring for the elderly residents of Jewish Care was an opportunity which he and his wife cherished because the opportunity to care for their own parents had been so tragically denied.

**For more information on donor opportunities, contact the Development Team on 8517 5963.**



# 5,000 PEOPLE IN CRISIS WILL CALL US...

JEWISH CARE NEEDS \$2.5MILLION TO ANSWER THESE CALLS.

After 64 years of marriage, Sam's passing was a terrible loss for his wife, Rachel. Everyday tasks such as shopping and cooking became insurmountable hurdles. Rachel's daughter Sarah called Jewish Care and was grateful to discover a variety of options which could assist her mother to continue living independently in her own home. Jewish Care's expertise in dealing with post-Holocaust trauma have played a huge role in helping Rachel to begin receiving the help she needs.



## Young People, Simchas, Volunteers

## Camp Invigorates Young Achievers

An enthusiastic group of Young Achievers recently enjoyed a two-day camp at Phillip Island.



Ellen, Rachel, Yarden, Jona, Avi, Chana, Ilana, Sarah, Danni.



Ellen, Sarah, Rachel, Danni, Chana.

YOUNG ACHIEVERS WORKSHOPS  
Open to Young People Aged 15-18

**Monday 10 May**

Fitness and Health

**Thursday 22 July**

Time Management and Life Balance

**Monday 13 September**

Theatre Sports

**If you are interested in attending workshops or supporting the Young Achievers Program, contact Donna Nuttall on 8517 5933 or [dnuttall@jewishcare.org.au](mailto:dnuttall@jewishcare.org.au)**

## Wedding Belles for Jewish Care

Friends and family celebrated the forthcoming wedding of Anna Krasnostein to David Serry.



Front Row, L to R: Minnie Smorgon (grandmother of the bride), Barbara Landau (mother of the bride), Anna Krasnostein (bride), Vivienne Serry (mother of the groom), Vera Finkel (grandmother of the groom). 2nd Row, L to R: Davina Chizik, Sarah Landau, Mireille Krasnostein, Lara Krasnostein and Marilyn Braun, hostess. Back Row, L to R: Karen Lambert, Emily and Grace Brott.

## Our First Tzedakah Box Donation

Saving tzedakah all year long, seven-year old Menachem Zeimer was so inspired at our Family Fun Day that he donated his year's charity savings to Jewish Care.



**To donate the contents of your tzedakah box, contact the Development Team on 8517 5963 or [development@jewishcare.org.au](mailto:development@jewishcare.org.au)**

## Leading by Example

Miriam Suss, new General Manager of Development, requested friends to donate to Jewish Care in honour of her recent birthday.



## Thank You

A tremendous thank you to all those who have made their recent celebrations an opportunity to donate to Jewish Care since January 2010.

**Bar Mitzvah**

Andrew Joel  
Harry Braun

**Birthdays**

Sally Baum  
Andrew  
& Natalie Bassat

**2nd Birthday**

Saul Kupshik

**40th Birthday**

Kate Davis  
Jacques &  
Joanne Levy  
Peter Irons

**50th Birthday**

Barry Kras

**60th Birthday**

Jeffrey Appel  
Robert Sofer  
Milton Lasnitzki  
Stephen Marks  
Peter Hornung  
Annette Rosen  
Miriam Suss

**70th Birthday**

Geoffrey King  
Samson Hyman

**80th Birthday**

Eric Thurin  
Greta Eisfelder  
Charles Holckner  
Sybil Salomon

**90th Birthday**

Alan Selwyn

**Engagement**

Josh Frydenberg  
& Amie Saunders

**Pre-Wedding**

David Serry &  
Anna Krasnostein

**Wedding**

Mark Goldberg  
& Rachel Kolber

**20th Wedding Anniversary**

Danny &  
Doreen Leber

**50th Wedding Anniversary**

Alan & Lily Midler  
Norman &  
Janet Raitman

**60th Wedding Anniversary**

Max &  
Giza Frayman

## Kids that Care



Dear Jewish Care,

A big thank you to Vincenza for coming to spend time in our Kinder and explaining to the children how their birthday money contribution was going to be spent by Jewish Care.

The children were so proud that their contribution would be used to buy equipment for children with special needs.

What a great lesson to learn about giving charity at such a young age.

Many thanks,

Jenny, Edna and all the children of Upper Kindergarten Mount Scopus College.

## Upcoming Friends of Monte Event

One of the world's most celebrated and critically acclaimed independent filmmakers, Academy Award winner Adam Elliot, will share his story at this year's Friends of Monte brunch.

This event is made possible thanks to Delysia Pahoff and the Friends of Montefiore committee and the generous support of our sponsors.



**For enquiries, contact Delysia Pahoff 0414 449 592.**



## Bar Mitzvah Boys Care for Children

Andrew Joel followed in his older brother's footsteps when he donated gifts from his recent Bar Mitzvah to support the Children's Respite House.



Brandon, Andrew, Toni and Craig Joel.

## Hop to the Posh Opp Shoppe

A veritable treasure trove, the Posh Opp Shoppe, located at 1226 Glen Huntly Road, contributes around \$500,000 every year towards supporting nearly 200 children with a disability to integrate into Jewish schools through the Jewish Schools Integration Program, of which Jewish Care is a participating contributor.



Volunteer Manager Rosalie Silverstein at the Posh Opp Shoppe.

The venture owes its success to its enthusiastic volunteers, generous supporters and customers who help support a worthy cause.

**To volunteer or donate to the Posh Opp Shoppe, contact Rosalie Silverstein on 9572 2248 or 0438 368 260.**



# 5,000 PEOPLE IN CRISIS WILL CALL US...

JEWISH CARE NEEDS \$2.5MILLION TO ANSWER THESE CALLS.

Suffering violence and abuse from a young age, Becky moved in and out of home numerous times in an attempt to find stability. Throughout those terrible years, Becky received ongoing counselling from Jewish Care. In addition, her participation in Jewish Care's Young Achievers Program gave her confidence, skills and support. Thanks to Jewish Care's help, Becky completed her VCE and is now doing further study. She looks forward to becoming a Young Achievers Mentor herself one day so that she can give back by helping someone else.





“This is the bread of our affliction. *Kol dichfin...* Whoever is hungry, let him come and eat... Now, we are slaves. Next year, we will be free.”

The answer is “*kol dichfin*” – by acknowledging the needs of others and actually opening our hearts and our homes and responding to their needs –

With prayers for peace, health and happiness for all.

## Rabbi Chaplain to Vic Police

Communicating understanding and respect for the unique needs of the Jewish community is on the agenda of Jewish Care's Rabbi, Meir Shlomo Kluwgant. As Chaplain to the Victorian Police Department, Rabbi Kluwgant represented the Jewish community in a new training course called Community Encounters, which introduces police cadets to issues and sensitivities relating to the various groups which comprise the Victorian community.



*Rabbi Meir Shlomo Kluwgant trains Victorian Police Cadets about Jewish community issues.*

## Festivities at Jewish Care

The Cultural and Spiritual Office ensures that the joy and dignity of Jewish heritage are part of life at Jewish Care.



*Yavneh College Grade 3 student Mia Weinmann brought Purim delight to Mina Melionov of Jewish Care's Montefiore Homes Community Residence.*



*Rabbi Meir Shlomo Kluwgant reads Megillah at Prahran Grove's Purim party attended by Yeshivah College volunteers, residents, family and friends.*

## How to donate to the 2010 Annual Appeal



**1800 JEWISH** (1800 539 474)



By fax  
**03 8517 5705**



Online  
**www.jcappeal.org.au**



By Mail  
619 St Kilda Road  
Melbourne Vic 3004

☐ \$50      ☐ \$100      ☐ \$250      ☐ \$500      ☐ Other    \$ \_\_\_\_\_

All gifts over \$2 are tax deductible

Method of payment ☐ I have enclosed a cheque payable to Jewish Care

Or please debit my ☐ VISA ☐ MASTERCARD ☐ DINERS CLUB ☐ AMEX

Expiry Date

Name on card \_\_\_\_\_ Signature \_\_\_\_\_

Email \_\_\_\_\_ DOB \_\_\_\_\_

Home phone \_\_\_\_\_ Work phone \_\_\_\_\_ Mobile \_\_\_\_\_

info@jewishcare.org.au  
www.jewishcare.org.au



Please direct any feedback regarding *My Connection* to [marketing@jewishcare.org.au](mailto:marketing@jewishcare.org.au)