

Summer 2009



Message from our President

When news of subprime lenders and collateralised debt obligations first began appearing in headlines some months ago, no one could have predicted the magnitude with which the Wall Street meltdown would impact on economies worldwide.

As we enter 2009, Australia is bracing itself for challenging times ahead, and it is inevitable that the global economic downturn will take its toll on our community as well.

In this edition of our newsletter, we want to share with you how our Community Support Services provide a helping hand for individuals and families when times are tough. Many members of the Jewish community already benefit from Jewish Care's short term financial aid programs, housing and accommodation assistance, counselling services and employment and training initiatives. Demand for these services is already on the increase, and we can only expect that this trend will continue in the months to come. It is vital that we fortify our commitment to meet the challenges that lie ahead.

We also want to share with you some of our many achievements in recent months including fantastic results in government spot checks and accreditations at our residential facilities and exciting progress in our various capital works projects at the Children's Respite House on Kooyong Road, the Centre for Supported Housing and Respite Care and the soon-to-be-completed Gary Smorgon House on Freeman Street. We are pleased to celebrate all our wonderful programs whether they are for older people, families, or people with disabilities. We also take pride in the achievements of our young people and our volunteers.

Of course, none of this would be possible without the support of those who share our vision of service to our community. We are ever grateful to our loyal donors. Together, we will continue to make a difference.



Robyne Schwarz, President

See inside



Community Support Services

Recent findings show that 35% of Jewish families earn a combined income of less than \$1000 per week.

Pages 2-3



Disability Expert Hosted

Jewish Care hosts third annual Active Support Network Forum.

Pages 4-5



Services for Older People

Fashion fever at the Active Living Centre.

Pages 6-7



Multimillion Dollar Donation for Gary Smorgon House

Donation boosts new aged care facility.

Pages 8-9

COMMUNITY SUPPORT SERVICES



Demand Rising for Jewish Care Support Services

Recent findings show that 35% of Jewish families earn a combined income of less than \$1,000 per week. This means that approximately a third of all families in the Jewish community are struggling weekly to cover basic expenses such as food, housing, utilities, transportation, clothing and education. These pressures have been compounded by the recent economic downturn.

Jewish Care's range of Community Support Services are designed to give members of our community a helping hand to confront these challenges. Our services range from immediate assistance such as counselling, housing and accommodation and emergency financial aid, which help families in crisis get back on track, through to our recruitment and training services, which foster longer term self-sufficiency.

The majority of our Community Support Services receive no or minimal government funding and as a result, we are dependent on the generous support of community donations to fund around two-thirds of the cost of these services. For recruitment and training services, please contact Always Moving Forward on 9528 4466. For all other requests for care, contact 8517 5999. For more information regarding our Community Support Services, contact Lorraine Raskin on 8517 5912.

Service Type	Background Information	Recent Achievements
Advice and Assessment	Our Intake and Assessment team is the first point of contact for information and access to Jewish Care's services. The team provides timely crisis response, professional assessment and referrals to Jewish Care programs and other agencies.	In the past financial year, our Intake staff received 3,595 calls for advice, information and crisis assistance.
Recruitment and Training	Always Moving Forward (AMF) provides a free recruitment service for both clients and candidates. AMF offers recruitment solutions for companies of all sizes, and personalised assistance and professional training for job seekers. It runs a range of business computing and creative skills courses from beginners level to intermediate level and beyond.	Since January 2008, AMF has successfully secured employment for 80 job seekers, and has run 20 training courses in business computing and creative writing. For a growing list of high profile corporations such as FBI Travel and Crown Casino, AMF has become the recruitment agency of choice.
Housing and Accommodation	The Housing Support Program provides practical solutions and information to members of the Jewish community experiencing difficulties with housing. The Program provides extensive advocacy and information and liaises with the Department of Public Housing.	54 clients were assisted into highly sought-after government housing this past financial year; 31 into transitional accommodation and 23 into public housing.
Financial Services	Short-term emergency material assistance is provided to help crisis-stricken members of the Jewish community meet basic living expenses.	Over \$90,000 worth of emergency financial aid was disbursed last financial year.
Counselling	A range of counselling options provide personalised support to individuals and families. Counsellors, social workers, psychologists and family therapists provide confidential, culturally-appropriate counselling and case management as well as life skills workshops and parenting courses.	Over the past year, Jewish Care has provided service for approximately 100 clients per month. The team also runs a series of parenting courses twice a year, which are open to members of the community and have been well received.



WATCH OUT FOR OUR 2009 ANNUAL APPEAL,
ARRIVING IN YOUR LETTER BOX FEBRUARY 23

Leading Expert on Child Trauma Draws Huge Crowds

Professor David Pelcovitz, a worldwide authority on family, child and adolescent trauma, presented a number of educational lectures across Melbourne addressing the prevention of child sexual assault and the healing process for victims of assault.

Approximately 1500 participants attended, including both professional and lay people and representatives from schools, youth groups, care providers, health professionals and the rabbinate.



Over 70 health care professionals from across the wider Victorian community attended Professor David Pelcovitz's innovative workshop at Jewish Care's Staff Education Centre.

The visit coincided with International White Ribbon Day, a worldwide event to bring attention to the crisis of violence against women.

A key highlight of Professor Pelcovitz's visit was an interactive workshop hosted by Jewish Care at its Staff Education Centre. Over 70 professionals ranging from social workers to psychiatrists from across the community spectrum were in attendance. Professor Pelcovitz presented models of intervention for working with individuals, couples and families facing current, recent or past trauma relating to sexual assault and offered structures for supporting parents who have themselves experienced childhood trauma.



Engaging with Youth at *headspace*

Our partnership with *headspace*, Australia's National Youth Mental Health Foundation, has made Jewish Care services more accessible to young people in our community.

A rotating team of representatives from Jewish Care's Community Support and Disability Services departments are deployed at *headspace*'s Carlisle Street headquarters, so that they can meet with Jewish youth on their own turf. The representatives direct young people to Jewish Care services appropriate to their needs, such as job placement, career training and general counselling.



DISABILITY SERVICES

Jewish Care Hosts World Expert in Disability

Hosting its third annual Active Support Network Forum this past September, Jewish Care continues to play a leading role in pursuing excellence in the provision of disability support services in Victoria. The Forum was attended by representatives of not-for-profit organisations and the Department of Human Services as well as academics from RMIT and other professionals. The guest speaker was Professor Jim Mansell from the University of Kent (UK), a world expert in disability care, who led discussion regarding the implementation of Active Support in various settings.

Active Support is an innovative approach to disability care where staff members participate in daily activities alongside their clients, in order to model and impart essential life skills.

Jewish Care was one of the first disability service providers in Victoria to pioneer Active Support. Since introducing the Active Support program at Jewish Care's Supported Accommodation in 2004, residents and families have reported increased skills, activities and satisfaction.

An article describing the benefits of Active Support, written by Disability Services Manager Daniel Leighton together with researchers from Monash University, was published in the September 2008 Journal of Intellectual and Developmental Disabilities.



Leading disability care expert Professor Jim Mansell (UK) addresses academics, professionals and Victorian service providers at Jewish Care's third annual Active Support Network Forum.

Insert: The Journal of Intellectual and Developmental Disabilities, which published the article on Active Support, co-authored by Disability Services Manager Daniel Leighton.

Jewish Care's New Set of Wheels

For people with limited mobility, sometimes just getting around can become an obstacle to accessing services.

A generous donation from Rae and Elmo Moss has eased the way by funding the purchase of a new Toyota Commuter. Allocated primarily for use by residents of Jewish Care's Respite House, the bus will also be used by the Active Living Centre. Full customisation will now enable two people with wheelchairs to attend the same outing, something that Jewish Care clients have been looking forward to for a long time.



Elmo and Rachel Moss present keys to the new Jewish Care bus to Jewish Care President Robyne Schwarz, together with Respite House Manager Vincenza Nobile, Disability Services Manager Daniel Leighton and CEO Bruce Salvin.

Supported Accommodation Goes Green

Funded in part with a grant from the Department of Human Services, the installation of solar hot water at our Supported Accommodation Houses has reduced Jewish Care's ecological footprint as well as its electricity bills, saving \$2,500 per year.



New solar hot water installations have reduced Jewish Care's electricity bills by \$2500 per year.



The all-abilities Dolphins basketball team in action.

Theodore Herzl Champions the Dolphins

The Theodore Herzl Bridge Club has come on board as major sponsor for the all-abilities Dolphins basketball team. The team, a joint initiative between Jewish Care and Maccabi Victoria, is the first team for people of all abilities to play under the Maccabi banner.

Jewish Care Artists Take the Spotlight at Jewish Museum

Renowned artist Victor Majzner hosted the official opening of Studio Voices, an exhibition of innovative artwork produced by artists of Jewish Care's Art Studio Space held at the Jewish Museum of Australia from 21 December 2008 to 4 January 2009.

Exhibited works by Lisa Grundman, Yolante Reisner, Gila Kozma and Robert Bardas were created over the past 12 months at Jewish Care's Art Studio Space in Elwood. Jewish Care's Art Studio Space conducts weekly art classes for individuals who are experiencing mental, emotional or other forms of psychological distress. Art facilitator David Hurwitz worked with each individual artist in the studio to help them craft their own unique techniques and personal styles.

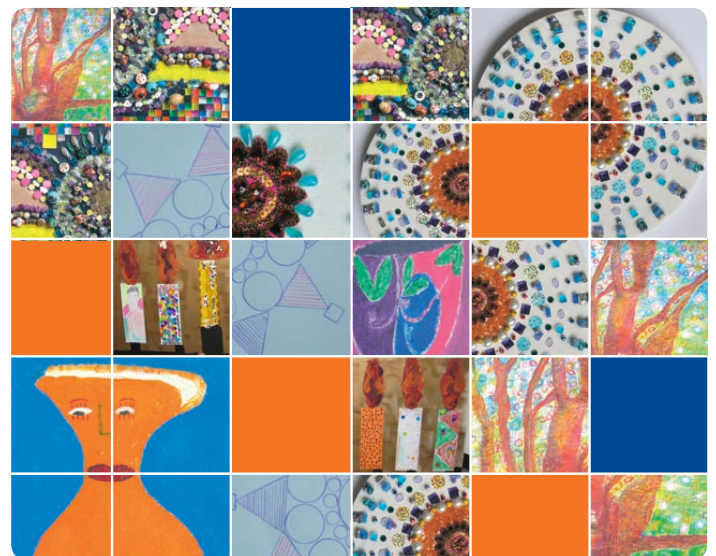


Staffer Sheryl Sacher gets ready to share her birthday cake with Mental Health program holiday-makers in Marysville.

Jewish Care in Marysville

Participants of Jewish Care Victoria's Mental Health program and participants of Jewish Care Sydney's Mental Health program enjoyed a 5-day holiday in Marysville this past November.

Hosted by Jewish Care, the group enjoyed evening meals and outings to Healesville Sanctuary, Stevenson's Falls, Bruno's Sculpture Garden and other attractions in the area. Shabbat dinner was a special highlight with prayers, delicious food, joyous singing and much laughter.



SERVICES FOR OLDER PEOPLE

Fashion Fever at Active Living Centre

Fashion for the active mature person was the theme of the 2008 Olympic Fashion Parade, sponsored by Jewish Care's Healthy Ageing Program. Showcasing our "forever young" models on the catwalk before a packed audience of nearly 200, the fashion parade exceeded expectations. Weeks of preparation involving fittings at Melbourne fashion houses and rehearsals practising stylised moves culminated in a stellar event which sparked cheers of encore from family and friends.

Proceeds from the event go towards purchasing equipment for Jewish Care's Active Living Centre, part of the Services for Older People program.



Alan Markov, Theo Walsh, Leslie Bloom and Abe Seigel strut the catwalk at the Jewish Care Healthy Ageing Olympic Fashion show.

30 Years of Terrific Tuesdays

Masha Zeleznikow OAM, was honoured in September for her outstanding service to the Tuesday Club at a special event commemorating the Club's 30th anniversary.

Meeting the first Tuesday of every month at the Kadimah Jewish Cultural Centre and National Library in Elsternwick, the legendary Tuesday Club was established in 1978 by Masha together with Sula Rozinski and Noemi Fooks to help Russian and Yiddish speaking immigrants make new friends while enjoying refreshments, games and guest speakers.

Jewish Care provides volunteers and other assistance to ensure that the Tuesday Club crowd is well catered for and ably entertained.

More Care for Those Who Need It

Jewish Care has won an important Government tender which will enable it to provide its broad range of services to more people in the Jewish community. The successful tender has gained Jewish Care 30 new care packages.

A care package consists of a mix of services, such as personal care or other services, designed to support an individual's unique requirements in order to enable them to continue living at home within their community.

Residents of Melbourne's Eastern and Southern suburbs will now have increased access to a range of quality support services administered by Jewish Care's Keshet Program, marking the first time ever that care packages will be provided by a Jewish organisation for Jewish people in the Eastern suburbs.

To access these services, applicants need to undergo an assessment with the Aged Care Assessment Service.

Easier Access to Government Services

As of the 1st of January 2009, the process of accessing government services will be made simpler, with the Victorian Government's endorsement of Jewish Care as a designated Home and Community Care (HACC) Assessment Service. This designation authorises Jewish Care to assess people's needs and in partnership with them, to develop a plan to meet those needs, from amongst the many services available throughout Victoria.



Masha Zeleznikow OAM and Izaak Presser celebrate 30 years of the Tuesday Club. Photo credit Peter Haskin.

Choristers Fill the Halls with the Sound of Music

Jewish Care's L'Chaim Choir marked its first anniversary this past December. Originally convened as Services for Older People Healthy Ageing Program's Monday morning singing group, the choir is now in high demand throughout the Melbourne Jewish community. Recent credits over the past 12 months include highly acclaimed performances at St Kilda Town Hall, Malvern Town Hall and the Emmy Home for the Aged.

The songsters range in age from mid-60s to 90-plus, and perform in English, Yiddish, Hebrew and Russian. The group is ably led by Choir Facilitator Linda Mellon. Participants hail from Russia, Poland, South Africa, Israel, England, Hungary and Germany, representing the many cultures and waves of immigration evident in Melbourne's diverse Jewish community today.



Linda Mellon, Facilitator, in rehearsal with the L'Chaim Choir

RESIDENTIAL SERVICES



Medicine Man

Alan Freedman, a consultant pharmacist, has been formally contracted to Jewish Care from the 1st January 2009 to oversee the medication reviews program as well as to provide ancillary services to the nursing staff regarding medication management and general information on the use of medication.



The government sponsored medication reviews program is geared for people living either at home or in an aged care facility and was developed in response to research which points to approximately 140,000 hospital admissions annually directly related to medicine mismanagement.

Full Marks for Spot Checks and Accreditation

Residential services' high quality of service shone through in recent spot check visits and accreditations. All residential facilities received excellent results in spot check visits by the Aged Care Standards and Accreditation Agency, while Smorgon Nursing Home achieved a perfect score — 44 out of 44 — in their Accreditation Site Audit. Assessors were impressed with our systems and the commitment of staff, with relatives, staff and residents expressing glowing satisfaction with Jewish Care's approach to the provision of care.



Aged Care

Standards and Accreditation
Agency Ltd

DEVELOPMENT

Meet our New Development Team



Alyson Miller, Director of Development

Over the last couple of months, Jewish Care has revitalised and expanded its Development department to incorporate fundraising, marketing and communications functions as well as volunteering and services for young people.

The new Development Team is infused with energy and vision and is keenly focused on engaging donors, volunteers, schools, philanthropic organisations, other Jewish community organisations, businesses, government and the broader community to create enduring partnerships that sustain and grow Jewish Care's vital work.

Our new Director of Development, Alyson Miller, hails from the UK. She brings to the role over 20 years experience working in the not-for-profit, government and corporate sectors. Alyson has extensive experience in senior leadership positions in community development, organisational development and capacity building, marketing, health and welfare and corporate social responsibility.

Any questions, feedback or ideas? Please contact Alyson on 8517 5715.

Centre for Supported Housing and Respite Care

With completion expected in late 2009, the Centre for Supported Housing and Respite Care is a conceptual breakthrough in community inclusiveness for people with a disability.



A variety of private and communal spaces as well as larger function areas will enable clients to access social activities while encouraging independence and freedom of choice. Centrally located within easy reach of many of Caulfield's key Jewish facilities, the Centre will serve as a hub for people with disabilities, offering training, skills building and community engagement together with opportunities for recreation and socialisation.

Multimillion Dollar Donation for Gary Smorgon House

A substantial donation from the Jack and Robert Smorgon Families Foundation has boosted Jewish Care's goal of funding development of its new aged care facility, the Gary Smorgon House, due for completion in March 2009.

Located in a residential neighbourhood on Freeman Street in the heart of Caulfield, the \$27-million facility represents a pioneering new approach to aged care. The "Ageing in Place" initiative allows residents to retain their own room and home environment across changing needs for assistance and levels of care.



From left Michael Smorgon, Val Smorgon OBE, Jack Smorgon AO, Andrew Blode CEO of the Jack and Robert Smorgon Families Foundation and member of the Jewish Care Board.



The Gary Smorgon House construction site on Freeman Street, Caulfield.

For more information please visit our dedicated website www.garysmorgonhouse.com.au

Children's Respite House

The Besen Family Foundation has approved a substantial grant to be awarded over the next three years to Jewish Care's Children's Respite House.



The Respite House provides much needed respite for Jewish children and adolescents with a disability. It is the only children's disability respite house in Victoria's inner city area, and the only one with kosher facilities.

The Besen Family Foundation's generous donation provides an additional 50 days of operation. Together with government grants, this means that the Respite House is open 210 days per year. Jewish Care's goal is for this first-rate facility to provide services 365 days a year.

Phantom Tea Raises Precious Funds

Government funding does not cover the costs of upgrading and modernising Jewish Care's 5 Supported Accommodation Homes for people with disabilities.

With your generosity, our 2009 Phantom Tea raised over \$45,000 to help fund installation of access ramps and emergency 'nurse call' systems, renovation of bathrooms, widening of doorways to accommodate wheelchairs and walking frames, and the purchase of new chairs and lounges for our older residents.



Helping Jewish Families in Crisis

Thanks to your generosity, this past Rosh Hashana we raised over \$68,000 to help many families in crisis.



Often, when a family member faces a major health setback, the whole family is affected. The money raised has helped to fund Jewish Care's crisis support services which provide vital counselling and support to help families in difficult circumstances get back on track.

Volunteers Saluted for their Essential Contribution

"To be is to do"

The essential work of Jewish Care's volunteers was celebrated at an end of year Awards Party at the Beth Weizmann Community Centre on 3rd December 2008.

There are nearly 300 Jewish Care volunteers. For those who have come to know and rely upon these special individuals, their assistance is priceless.

Jewish Care CEO Bruce Salvin presided over the award presentation and gave his personal appreciation to each honouree. Special awards were presented to volunteers with exceptionally long service to the organisation.



Congratulations to all our volunteers and award recipients!

5 Years Service

Naomi Alberts
Roger Alberts
Jenny Blakeley
Ida Borodulin
Dina Burgess
Emmanouil Droukman
Harry Greenberg ז"ל
Joy Gunzburg
Liz James
Shirley Lebransky
Margot Lustig
Margaret Masur
Izaak Presser
Susan Rosenbaum
Greg Shalit
Regina Sperling

10 Years Service

Esther Baker
Eleanor Brodie
Danny Kahan
Brigetta Paneth
David Rooseboom
Miriam Rubinfeld

15 Years Service

Vivienne Chaikin
George Drabble
Helen Eisenberger
Ludwik Herschtal
Phyllis James

20 Years Service

Sorin Ronea
Fritz Weiss

30 Years Service

Sula Rozinski
Masha Zeleznikow

Partnership Awards

B'nai Brith
Melbourne Hebrew Ladies
Posh Opp Shoppe
Temple Beth Israel

DEVELOPMENT

YouthInspire Activist is Finalist at Port Phillip Civic Awards

Dean Levitan of Jewish Care's YouthInspire program was recognised for his service to the community, receiving a certificate of recognition at the City of Port Phillip Civic Awards Ceremony on 11th December 2008.

The Year 11 student was responsible for founding YAGID (Youth Against Genocide in Darfur). His involvement with Jewish Care's YouthInspire program enabled Dean to lift the profile of his group and provided YAGID with valuable resources and

support in their campaign to raise public awareness regarding the dire situation in Darfur.

Dean's efforts have encouraged young people to establish committees which meet weekly in schools across Melbourne. These committees organise events, write letters to the government, engage with various politicians and the media, fundraise and work collaboratively with DAN (Darfur Australia Network) and Jewish Aid. YAGID has grown to include

branches in Sydney and Perth. Membership Australia-wide currently stands at 150.



Dean Levitan of Jewish Care's YouthInspire program accepting his award for service to the community from newly elected Mayor Frank O'Connor at the City of Port Phillip Civic Awards Ceremony.

Celebrating our Young Achievers

Jewish Care's Young Achievers Program heralded the year's achievements at a celebration held 10th December 2008.

The Young Achievers Program is a mentoring and skills development program for young people aged between Year 10 and first year university.

Celebrate '08 acknowledged the profound impact of the Program's volunteer mentors in supporting the young people, as well as the personal successes and remarkable contributions of the Young Achievers.



Yael Bartak, Melodie Bereson and Denise Kain at Celebrate '08

For more information, please contact Donna Nuttall, Youth Projects Coordinator on 8517 5933.

Special Supporters Luncheon

Seventy people attended Jewish Care's special supporters luncheon at Quat Quatta. The guest speaker, Jonathan Welch, is founder and director of the award winning Choir of Hard Knocks.

Many of the participants in the Choir of Hard Knocks share a similar background of financial struggle and societal marginalisation. The joy and euphoria which they have discovered through music making in a group dynamic has given them a sense of purpose, structure and respect, as well as a sense of belonging to a "family".

Jonathan shared his story of the Choir of Hard Knocks with our supporters, giving them an insight into what can be accomplished when those who are disadvantaged are given a voice. He emphasised that anyone can achieve — and a team can achieve even more.

Musical entertainment was provided by popular pianist Josh Cohen, who generously donated his time.



Jewish Care special supporters Robert Gluck, Jack Carmen, Saul Same.



Jewish Care CEO Bruce Salvin thanks guest speaker Jonathan Welch, founder and director of the Choir of Hard Knocks together with Jewish Care Relationship Officers Tony Levy and Val Granat.



Jewish Care special supporters Howard and Michele Kiel.



Saul Same requested donations to the Munzer residence to honour the birthday of his late wife Lucy while she was a resident there.



Lorraine Raskin acknowledged Naomi Diamond's Bat Mitzvah donation in honour of her great grandmother Chana Gropman, a resident at Montefiore Homes.



Ariel Golvan's Bar Mitzvah gift to Jewish Care honours his maternal great grandparents who were amongst the original founders of the Jewish Welfare Society, and his paternal grandparents who were able to purchase their first home with a Jewish Welfare Society loan.



Debi Layton donated to Jewish Care's Anthony Layton Memorial Trust in honour of her late brother Anthony Layton.

A tremendous thank you to all those who have made their celebrations an opportunity to donate to Jewish Care.

BIRTHDAYS

Ruth Hendel
Sara Rosenberg
Lucy Same ז"ל
Percy Sheiman

Opsheren

Gavriel Sher

4th Birthday

The Children of Mount
Scopus Upper
Kinder Aleph

5th Birthday

Ray Levin

Bat Mitzvah

Naomi Diamond
Jemma Katz
Danita Moshinsky
Isabelle Rich
Madison Taylor

Bar Mitzvah

Ariel Golvan
Stevie Gringlas

30th Birthday

Keren Grynberg

50th Birthday

Fay Fitt
Tammy Mote
Gregory Nankin
Annie Rose
Bruce Rosengarten

60th Birthday

Stephy Dallendach
Jack Lipp
David Loewy
Eric and Vivienne
Musat
Jack Rosen
Robyne Schwarz
Reuben Urban
Deidre Wainrit

70th Birthday

Geoff Cashmore

80th Birthday

Margaret's Ashton

Betty Frank
Ida Joffe
Wally Kahn
Sylvia Portek
Leon Ress
Jean Sharp
Tusia Zbar

90th Birthday

David Mandie AM OBE
Frania Oberklaid

97th Birthday

Ignacy Tymand

WEDDINGS

Pre Wedding

Debi Layton
Melissa Singer

Wedding

Reuben Glass
and Ann Cebon
Natasha Karp
and Warren Mymin

ANNIVERSARIES

Wedding Anniversary

Freda and
Oscar Tager
Margaret
and Michael Wise

Golden Wedding Anniversary

Oskar and Jeanette
Delatycki

60th Wedding Anniversary

Ella and Harry Barr

SPECIAL OCCASIONS

Gab Aghion
and Penny Adeney

MEMORIALS

Debbie Morrison ז"ל
Michael Schwarz ז"ל
Janet Zeleznikow ז"ל

Since July 2008 a total of \$90,000 was raised for Jewish Care through simchas and memorials.

Why not share your Simcha with someone in need?

REQUEST DONATIONS TO JEWISH CARE INSTEAD OF GIFTS.

ISABELLE RICH'S STORY

There's nothing wrong with getting presents – in fact it's usually a lot of fun. But Isabelle decided that she wanted her Bat Mitzvah, the day when she would take on the responsibility of adulthood, to represent something more. She wanted to draw a line in the sand and mark this milestone in her life by giving back to her community. She felt so strongly that rather than accepting presents, she asked her friends and family to donate money to Jewish Care in her name.

We would like to take this opportunity to thank Isabelle and all those who gave towards the wonderful amount of \$7500 that was raised for one of Jewish Care's disability services, the Children's Respite House. The experience proved to be such a positive one, that Isabelle decided to continue supporting Jewish Care by donating her time there as a volunteer. She loves the involvement and is finding that it is so much more rewarding to give than it is to receive.

CULTURAL AND SPIRITUAL

Let There be Light

Jewish Care's Disability Services celebrated the festival of lights at a Chanukah party at the Melbourne Hebrew Congregation on 21st December 2008.

Rabbi Meir Kluwgant of Jewish Care and Rabbi Dovid Rubinfeld of the Melbourne Hebrew Congregation led the traditional menorah candlelighting ceremony, followed by latkes, doughnuts, music and dancing.

To commemorate the occasion, a generous gift of challah covers was presented on behalf of the Melbourne Hebrew Congregation to each of Jewish Care's Supported Accommodation Homes.



A resident of Jewish Care's Supported Accommodation Homes lights the menorah at the Melbourne Hebrew Congregation.

And More Light!

Chanukah was marked by staff and residents throughout Jewish Care with distributions of *dreidls* (spinning tops) and chocolate Chanukah *gelt* (coins), educational staff seminars replete with latkes and doughnuts, and electric Chanukah menorahs aglow throughout the eight day period.

Jewish Care

ABN: 78 345 431 247

Jewish Care's proud history spans 150 years, founded on core Jewish values of *tzedekah*, *chesed*, *derech eretz* and *mishpacha*: charity, kindness, respect and family.

We strive to be the finest community care organisation in Australia and a world leader in the field through the provision of first-class services to all sectors of the Victorian Jewish Community.

Jewish Care (Vic) Inc.

619 St Kilda Road
Melbourne Vic 3004

Ph. (03) 8517 5999

Fax. (03) 8517 5778

www.jewishcare.org.au

Graphic Design by

Finger Graphics

Printed by

Print Dynamics

Distributed by

iGroup Australia

Message from our Rabbi



One of the only *mitzvot* (biblical commandments) that comes with a guaranteed return is the *mitzvah* of "giving"; so much so, that G-d Himself is quoted by our Sages as saying, "Test me on this, and know that My words are truthful".

During these trying times of economic upheaval one might be tempted to rationalise one's charitable commitments. However it is specifically during these times that one should remember that all blessings come from above, including the blessing of wealth. In fact our greatest blessing is our ability to give.

The great philanthropist George Rohr said in the name of his father, Sammy Rohr: "During good times, when things are going well, it's no *kuntz* (feat) to be a *Baal Tzedaka* (Master of Charity). When it gets hard, that's when it's important..."

May the Almighty bless us all in our efforts so that we can look forward to stronger economic times when we will be able to continue giving from a position of stability and strength.

Hold the Date



February 2009

Wed 11 Feb Foundation laying at the site of the new Centre for Supported Housing and Respite Care

Wed 18 Feb Official opening of the Children's Respite House

Mon 23 Feb Launch of Jewish Care's Annual Appeal 2009

March 2009

Tues 7 Mar Official launch of the National Respite for Carers Program

May 2009

Wed 6 May Friends of Montefiore Brunch

October 2009

Wed 22 Oct Generations of Women Annual Brunch

If you'd like to help us or if we could help you in any way, please contact us on 8517 5963 or development@jewishcare.org.au